



**SGS-CSTC Standards Technical Services
(Shanghai) Co., Ltd.**

588 West Jindu Road, Xinqiao, Songjiang, 201612 Shanghai, China
Telephone: +86 (0) 21 6191 5666
Fax: +86 (0) 21 6191 5678
ee.shanghai@sgs.com

Report No.: SHEM170300111801
Page: 1 of 64

1 Cover Page

TEST REPORT

| | |
|---|---|
| Application No.: | SHEM1703001118IT |
| Applicant: | Zhejiang Dahua Vision Technology Co., Ltd. |
| Equipment under Test (EUT) NOTE: The following sample(s) was/were submitted and identified by the client as. | |
| Product Name: | IP Camera |
| Model No.(EUT): | DH-IPC-EBW8630P |
| Add Model No.: | IPC-EBW81230, DH-IPC-EBW81230, IPC-EBW81230P, IPC-EBW81230N, DH-IPC-EBW81230P, DH-IPC-EBW81230N, IPC-EBW8630, DH-IPC-EBW8630, IPC-EBW8630P, IPC-EBW8630N, DH-IPC-EBW8630N, IPC-EBW8630N-IVC, IPC-EBW8630P-IVC, DH-IPC-EBW8630P-IVC, DH-IPC-EBW8630N-IVC |
| Standards: | EN 55032:2015(Class B), EN 55024:2010+A1:2015, EN 50130-4:2011+A1:2014, EN 61000-3-2:2014, EN 61000-3-3:2013 |
| Date of Receipt: | 2017-03-08 |
| Date of Test: | 2017-03-09 to 2017-03-13 |
| Date of Issue: | 2017-03-17 |
| Test Result: | Pass* |

* In the configuration tested, the EUT detailed in this report complied with the standards specified above.

The CE mark as shown below can be used, under the responsibility of the manufacturer, after completion of an EU Declaration of Conformity and compliance with all relevant EU Directives.



The manufacturer should ensure that all products in series production are in conformity with the product sample detailed in this report. If the product in this report is used in any configuration other than that detailed in the report, the manufacturer must ensure the new system complies with all relevant standards. Any mention of SGS International Electrical Approvals or testing done by SGS International Electrical Approvals in connection with, distribution or use of the product described in this report must be approved by SGS International Electrical Approvals in writing.

This document is issued by the Company subject to its General Conditions of Service printed overleaf, available on request or accessible at www.sgs.com/terms_and_conditions.htm and, for electronic format documents, subject to Terms and Conditions for Electronic Documents at www.sgs.com/terms_e-document.htm. Attention is drawn to the limitation of liability, indemnification and jurisdiction issues defined therein. Any holder of this document is advised that information contained hereon reflects the Company's findings at the time of its intervention only and within the limits of Client's instructions, if any. The Company's sole responsibility is to its Client and this document does not exonerate parties to a transaction from exercising all their rights and obligations under the transaction documents. This document cannot be reproduced except in full, without prior written approval of the Company. Any unauthorized alteration, forgery or falsification of the content or appearance of this document is unlawful and offenders may be prosecuted to the fullest extent of the law. Unless otherwise stated the results shown in this test report refer only to the sample(s) tested and such sample(s) are retained for 90 days only

2 Test Summary

| ELECTROMAGNETIC INTERFERENCE (EMI) | | | |
|---|--|--|---------------|
| Test | Test Requirement | Test Method | Result |
| Conducted Emission (150kHz to 30MHz) | EN 55032:2015 | EN 55032:2015 & CISPR 16-2-1:2014 | PASS |
| Conducted Emission on Telecommunication (150kHz to 30MHz) | EN 55032:2015 | EN 55032:2015 & CISPR 16-2-1:2014 | PASS |
| Radiated Emission, (30MHz to 1GHz) | EN 55032:2015 | EN 55032:2015 & CISPR 16-2-3:2010+ A1:2010+A2:2014 | PASS |
| Radiated Emission (above 1 GHz) | EN 55032:2015 | CISPR 16-2-3: 2010+A1:2010+A2:2014 | PASS* |
| Harmonic Emission on AC, (100 Hz to 2 kHz) | EN 61000-3-2:2014 | EN 61000-3-2:2014 | N/A*** |
| Flicker Emission on AC | EN 61000-3-3:2013 | EN 61000-3-3:2013 | PASS |
| Electromagnetic Susceptibility(EMS) | | | |
| Test | Test Requirement | Test Method | Result |
| ESD | EN 55024:2010+A1:2015 & EN 50130-4:2011+A1:2014 | EN 61000-4-2:2009 | PASS |
| Radiated Immunity, (80MHz to 1 GHz) | EN 55024:2010+A1:2015 | EN 61000-4-3:2006 +A1: 2008+A2:2010 | PASS |
| Radiated Immunity, (80MHz to 2.7 GHz) | EN 50130-4:2011+A1:2014 | EN 61000-4-3:2006 +A1: 2008+A2:2010 | PASS |
| Electrical Fast Transients (EFT) on AC ports | EN 55024:2010+A1:2015 & EN 50130-4:2011+A1:2014 | EN 61000-4-4:2012 | PASS |
| Electrical Fast Transients (EFT) on signal ports | EN 55024:2010+A1:2015 & EN 50130-4:2011+A1:2014 | EN 61000-4-4:2012 | PASS |
| Surge Immunity on AC | EN 55024:2010+A1:2015 & EN 50130-4:2011+A1:2014 | EN 61000-4-5:2014 | PASS |
| Surge Immunity on signal ports | EN 55024:2010+A1:2015 & EN 50130-4:2011+A1:2014 | EN 61000-4-5:2014 | PASS |
| Injected Currents on AC ports (150kHz to 80MHz) | EN 55024:2010+A1:2015 | EN 61000-4-6:2014 | PASS |
| Injected Currents on signal ports (150kHz to 80MHz) | EN 55024:2010+A1:2015 | EN 61000-4-6:2014 | PASS |
| Injected Currents on AC ports (150kHz to 100MHz) | EN 50130-4:2011+A1:2014 | EN 61000-4-6:2014 | PASS |
| Injected Currents on signal ports (150kHz to 100MHz) | EN 50130-4:2011+A1:2014 | EN 61000-4-6:2014 | PASS |
| Power Frequency Magnetic Field | EN 55024:2010+A1:2015 | EN 61000-4-8:2010 | N/A** |
| Voltage Dips and Interruptions | EN 55024:2010+A1:2015 & | EN 61000-4-11:2004 | PASS |



| | | | |
|---|-------------------------|--|--|
| on AC | EN 50130-4:2011+A1:2014 | | |
| Remark: | | | |
| Signal ports including LAN port, Audio in & Audio out port, Alarm in & Alarm out port. | | | |
| EUT In this whole report EUT means Equipment Under Test. | | | |
| N/A: Not applicable, | | | |
| Note1:* The highest frequency of the internal sources of the EUT is above 1GHz, the measurement shall be made up to 5 times the highest frequency of 6GHz, whichever is less. | | | |
| Note2:**The EUT does not contain any component which is susceptible from the magnetic field. | | | |
| Power-frequency magnetic field immunity test is only applicable to equipment containing devices susceptible to magnetic fields, such as CRT monitors, Hall elements, electrodynamic microphones, magnetic field sensors, etc. | | | |
| Note3: ***Please refer to Section 6.5 of this report for details. | | | |
| Note4: There are series models mentioned in this report and they are the similar in electrical and electronic characters. Only the model DH-IPC-EBW8630P was tested since their differences are pixel. | | | |

3 Contents

| | | |
|----------|---|-----------|
| 1 | COVER PAGE | 1 |
| 2 | TEST SUMMARY | 2 |
| 3 | CONTENTS..... | 4 |
| 4 | GENERAL INFORMATION | 6 |
| 4.1 | Client Information..... | 6 |
| 4.2 | Details of E.U.T. | 6 |
| 4.3 | E.U.T Operation Mode..... | 6 |
| 4.4 | E.U.T Operation Environment | 6 |
| 4.5 | Description of Support Units | 6 |
| 4.6 | Deviation from Standards | 6 |
| 4.7 | Abnormalities from Standard Conditions | 6 |
| 4.8 | Modification/Retest Record | 6 |
| 4.9 | Monitoring of EUT for All Immunity Test..... | 6 |
| 4.10 | Test Location..... | 7 |
| 4.11 | Test Facility..... | 7 |
| 4.12 | Measurement Uncertainty..... | 8 |
| 5 | EQUIPMENT LIST | 9 |
| 6 | ELECTROMAGNETIC INTERFERENCE TEST RESULTS..... | 13 |
| 6.1 | Conducted Emissions on Mains Terminals | 13 |
| 6.2 | Conducted Emissions at Telecommunication ports..... | 17 |
| 6.3 | Radiated Emissions, 30MHz to 1GHz | 20 |
| 6.4 | Radiated Emissions, 1GHz to 6GHz..... | 24 |
| 6.5 | Harmonics Test Result | 28 |
| 6.6 | Flicker Test Result | 29 |
| 7 | ELECTROMAGNETIC SUSCEPTIBILITY TEST RESULTS | 31 |
| 7.1 | Performance Criteria Description in Clause 7 of EN 55024..... | 31 |
| 7.2 | ESD..... | 32 |
| 7.3 | Radiated Immunity..... | 35 |
| 7.4 | Electrical Fast Transients (EFT) | 39 |
| 7.5 | Slow high energy voltage surge | 42 |
| 7.6 | Conducted Immunity | 48 |
| 7.7 | Voltage Dips and Interruptions | 52 |
| 8 | PHOTOGRAPHS (TEST SETUP FOR THE EUT)..... | 54 |
| 8.1 | Conducted Emissions on Mains Terminals Test Setup..... | 54 |



| | | |
|----------|---|-----------|
| 8.2 | Conducted Emissions on Telecommunication Terminals Test Setup | 54 |
| 8.3 | Radiated Emission Test Setup | 55 |
| 8.4 | Flicker Test Setup | 56 |
| 8.5 | ESD Test Setup | 57 |
| 8.6 | Radiated Immunity Test Setup | 58 |
| 8.7 | EFT, Surge, Voltage Dip and Interruptions on Mains Terminals Test Setup | 59 |
| 8.8 | EFT on Signal Terminals Test Setup | 59 |
| 8.9 | Surge on Signal Terminals Test Setup | 60 |
| 8.10 | Conducted Immunity on Mains Terminals Test Setup | 60 |
| 8.11 | Conducted Immunity on Signal Terminals Test Setup | 61 |
| 9 | EUT CONSTRUCTIONAL DETAILS | 62 |
| 9.1 | Exterior of EUT | 62 |
| 9.2 | Interior of EUT | 63-64 |

4 General Information

4.1 Client Information

Applicant: Zhejiang Dahua Vision Technology Co., Ltd.
 Address of Applicant: No.1199, Bin'an Road, Binjiang District, Hangzhou, P.R. China
 Manufacturer: Zhejiang Dahua Vision Technology Co., Ltd.
 Address of Manufacturer: No.1199, Bin'an Road, Binjiang District, Hangzhou, P.R. China
 Factory: Zhejiang Dahua Vision Technology Co., Ltd.
 Address of Factory: No.1199, Bin'an Road, Binjiang District, Hangzhou, P.R. China

4.2 Details of E.U.T.

Power Supply: DC12V or PoE

4.3 E.U.T Operation Mode

Functions/Modes: a; Monitoring mode
 Monitoring mode: Keep EUT monitoring continual.

4.4 E.U.T Operation Environment

Temperature Range: 20-25°C
 Humidity Range: 30-60% RH
 Atmospheric Pressure Range: 100-105kPa

4.5 Description of Support Units

The EUT has been tested with associated equipment below.

| Description | Manufacturer | Model No. |
|---------------------|--------------|-----------------|
| Laptop 1 | LENOVO | R400 |
| Switching Adapter 1 | Aoepower | BSW0127-1210002 |

4.6 Deviation from Standards

All Immunity tests to EN 55024:2010+A1:2015 & EN 50130-4:2011+A1:2014 were performed in accordance with EN 61000-4-2:2009, EN 61000-4-3:2006+A1:2008+A2:2010, EN 61000-4-4:2012, EN 61000-4-5:2014, EN 61000-4-6:2014, EN61000-4-11:2004 and not IEC 61000-4-x. (x=2,3,4,5,6,11).

4.7 Abnormalities from Standard Conditions

None.

4.8 Modification/Retest Record

None.

4.9 Monitoring of EUT for All Immunity Test

Audio: None.
 Visual: Working status of the EUT.

4.10 Test Location

SGS-CSTC Standards Technical Services (Shanghai) Co., Ltd. E&E Lab

588 West Jindu Road, Xinqiao, Songjiang, 201612 Shanghai, China

Tel: +86 21 6191 5666

Fax: +86 21 6191 5678

4.11 Test Facility

- **CNAS (No. CNAS L0599)**

CNAS has accredited SGS-CSTC Standards Technical Services (Shanghai) Co., Ltd. to ISO/IEC 17025:2005 General Requirements for the Competence of Testing and Calibration Laboratories (CNAS-CL01 Accreditation Criteria for the Competence of Testing and Calibration Laboratories) for the competence in the field of testing. Date of expiry: 2017-07-14.

- **FCC – Registration No.: 402683**

SGS-CSTC Standards Technical Services (Shanghai) Co., Ltd. has been registered and fully described in a report filed with the Federal Communications Commission (FCC). The acceptance letter from the FCC is maintained in our files. Registration No.: 402683, Expiry Date: 2017-09-16.

- **Industry Canada (IC) – IC Assigned Code: 8617A**

The 3m Semi-anechoic chamber of SGS-CSTC Standards Technical Services (Shanghai) Co., Ltd. has been registered by Certification and Engineering Bureau of Industry Canada for radio equipment testing with Registration No.: 8617A-1. Expiry Date: 2017-06-18.

- **VCCI (Member No.: 3061)**

The 3m Semi-anechoic chamber and Shielded Room of SGS-CSTC Standards Technical Services (Shanghai) Co., Ltd. has been registered in accordance with the Regulations for Voluntary Control Measures with Registration No.: R-3868,C-4336,T-2221,G-830 respectively. Date of Expiry: 2017-11-16.

4.12 Measurement Uncertainty

According to CISPR 16-4-2.

| Test Item | Frequency Range | Measurement Uncertainty | U _{CISPR} |
|--|-----------------|-------------------------|---------------------|
| Conducted Emission at mains port using AMN | 9kHz-150kHz | 3.2 dB | 3.8 dB |
| Conducted Emission at mains port using AMN | 150kHz-30MHz | 3.0 dB | 3.4 dB |
| Conducted Emission at mains port using VP | 9kHz-30MHz | 1.9 dB | 3.9 dB |
| Conducted Emission at telecommunication port using AAN | 150kHz-30MHz | 2.4 dB | 5.0 dB |
| Radiated Emission | 30MHz-1000MHz | 4.4 dB | 6.3 dB |
| Radiated Emission | 1GHz-18GHz | 4.6 dB | 5.2 dB (1GHz-6GHz) |
| | | | 5.5 dB (6GHz-18GHz) |
| Disturbance Power | 30MHz-300MHz | 3.5 dB | 4.5 dB |
| Remark: AMN – Artificial Mains Network VP – Voltage Probe ANN – Asymmetric Artificial Network | | | |

Note: The measurement uncertainty represents an expanded uncertainty expressed at approximately the 95% confidence level using a coverage factor of k=2.

5 Equipment list

Conducted Emission

| Item | Test Equipment | Manufacturer | Model No. | Serial No. | Cal. Date | Cal.Due date |
|------|--------------------------------------|-----------------|-----------|------------|------------|--------------|
| 1 | EMI test receiver | Rohde & Schwarz | ESCS30 | 100086 | 2016-12-29 | 2017-12-28 |
| 2 | Line impedance stabilization network | SCHWARZB ECK | NSLK 8127 | 8127490 | 2016-12-29 | 2017-12-28 |
| 3 | Line impedance stabilization network | EMCO | 3816/2 | 00034161 | 2016-12-29 | 2017-12-28 |

Radiated Emission(30M-1G)

| Item | Test Equipment | Manufacturer | Model No. | Serial No. | Cal. Date | Cal.Due date |
|------|---------------------------|-----------------|---------------------|------------|------------|--------------|
| 1 | EMI test receiver | Rohde & Schwarz | ESU40 | SHEM 051-1 | 2016-08-12 | 2017-08-11 |
| 2 | CONTROLLER | INNCO | CO200 | SHEM 047-1 | N/A | N/A |
| 3 | ANTENNA MAST | INNCO | MA400-EP | SHEM 047-2 | N/A | N/A |
| 4 | TURN DEVICE | INNCO | DE 3600-RH | SHEM 047-3 | N/A | N/A |
| 5 | Broadband UHF-VHF ANTENNA | SCHWARZB ECK | VULB 9168 | SHEM 048-1 | 2016-12-29 | 2017-12-28 |
| 6 | Low Frequency Amplifier | CLAVIIO | BDLNA-0 001-4120 10 | SHEM 164-1 | 2016-08-12 | 2017-08-11 |
| 7 | Semi/Fully Anechoic | ST | 11*6*6M | SHEM 078-2 | 2016-08-17 | 2017-08-16 |

Radiated Emission (above1G)

| Item | Test Equipment | Manufacturer | Model No | Serial No. | Cal. Date | Cal.Due date |
|------|--------------------------------------|-----------------|----------------------|------------|------------|--------------|
| 1 | EMI TEST RECEIVER | ROHDE & SCHWARZ | ESU40 | SHEM051-1 | 2016-08-12 | 2017-08-11 |
| 2 | CONTROLLER | INNCO | CO200 | SHEM047-1 | N/A | N/A |
| 3 | ANTENNA MAST | INNCO | MA400-EP | SHEM047-2 | N/A | N/A |
| 4 | TURN DEVICE | INNCO | DE 3600-RH | SHEM047-3 | N/A | N/A |
| 5 | DOUBLE RIDGED BROADBAND HORN ANTENNA | SCHWARZBECK | BBHA 9120D | SHEM050-1 | 2017-01-16 | 2018-01-15 |
| 6 | HIGH-AMPLIFIER | SCHWARZBECK | SCU-F0118-G40-BZ4-CS | SHEM050-2 | 2017-01-14 | 2018-01-13 |
| 7 | SEMI/FULLY ANECHOIC | ST | 11*6*6M | SHEM078-2 | 2016-08-17 | 2017-08-16 |

Flicker

| Item | Test Equipment | Manufacturer | Model No. | Serial No. | Cal. Date | Cal.Due date |
|------|---|--------------|-----------|--------------|------------|--------------|
| 1 | Single phase harmonics & flicker analyzer | EM test | DPA500 | V050710 0125 | 2016-03-07 | 2017-03-06 |
| 2 | AC SOURCE 6KVA | EM test | ACS500 | V050710 0126 | 2016-03-07 | 2017-03-06 |

Electrostatic Discharge Test

| Item | Test Equipment | Manufacturer | Model No. | Serial No. | Cal. Date | Cal.Due date |
|------|-----------------------------------|--------------|-----------|------------|------------|--------------|
| 1 | Electrostatic Discharge Simulator | TESEQ | NSG 437 | 468 | 2016-08-15 | 2017-08-14 |

EFT Test

| Item | Test Equipment | Manufacturer | Model No. | Serial No. | Cal. Date | Cal.Due date |
|------|---|--------------|-----------------|------------|------------|--------------|
| 1 | Immunity Test System | EMC PARTNER | TRA3000 F-S-D-V | SHEM 163-1 | 2016-12-29 | 2017-12-28 |
| 2 | Matching resistors for EFT/burst generators | EM test | KW50 | SHEM 026-4 | 2016-12-29 | 2017-12-28 |
| 3 | Matching resistors for EFT/burst generators | EM test | KW1000 | SHEM 026-5 | 2016-12-29 | 2017-12-28 |

Surge

| Item | Test Equipment | Manu facturer | Model No. | Serial No. | Cal. Date | Cal.Due date |
|------|------------------------------|------------------|-----------------|-------------|------------|--------------|
| 1 | EMS test machine | EMC Partner | TRA3000 F-S-D-V | 1229 | 2016-12-29 | 2017-12-28 |
| 2 | Data coupling network 4 line | EM test | CNV 504 | 402000 2001 | 2016-08-12 | 2017-08-11 |

RI(80M-2.7G)

| Item | Test Equipment | Manu facturer | Model No. | Serial No. | Cal. Date | Cal.Due date |
|------|--|------------------|---------------|------------|------------|--------------|
| 1 | Single Generator | Rohde & Schwarz | SMJ 100A | 101394 | 2016-10-29 | 2017-10-28 |
| 2 | Calibrated Stacked Lagarithmic-Periodic Test-Antenna | SCHWARIBF CK | STLP 9128D | 9128 D 055 | / | / |
| 3 | Stacked DoubleLog-Per. Antenna | SCHWARIBF CK | STLP 9149 | 9149-187 | / | / |
| 4 | Power Amplifiers | MILMEGA | 80RF100 0-250 | 1053058 | / | / |
| 5 | Power Amplifiers | MILMEGA | AS0840-55-55 | 1053059 | / | / |
| 6 | Power Meter | Rohde & Schwarz | NRP | 101641 | 2017-01-13 | 2018-01-12 |
| 7 | Electromagnetic Field Probe | ETS-Lindgren | HI-6113 | 0011459 1 | 2016-09-07 | 2017-09-06 |
| 8 | Power sensor | Rohde & Schwarz | NRP-Z91 | 100647 | 2016-12-29 | 2017-12-28 |
| 9 | Power sensor | Rohde & Schwarz | NRP-Z22 | 101096 | 2016-08-12 | 2017-08-11 |

Voltage dips and Interruption Test

| Item | Test Equipment | Manu facturer | Model No. | Serial No. | Cal. Date | Cal.Due date |
|------|------------------|------------------|-----------------|------------|------------|--------------|
| 1 | EMS test machine | EMC Partner | TRA3000 F-S-D-V | 1229 | 2016-12-29 | 2017-12-28 |

Conducted Immunity Test

| Item | Test Equipment | Manu facturer | Model No. | Serial No. | Cal. Date | Cal.Due date |
|------|-------------------------------|------------------|-------------|------------|------------|--------------|
| 1 | signal generator | Rohde & Schwarz | SMJ 100A | 101394 | 2016-10-29 | 2017-10-28 |
| 2 | PAMP Conducted RF test system | HAEFFLY | PAMP 250 | 151708 | 2016-12-29 | 2017-12-28 |
| 3 | CDN impedance and K-factor | LUTHI | L-801 M1 | 2116 | 2016-12-29 | 2017-12-28 |
| 4 | CDN impedance and K-factor | LUTHI | L-801 M2/M3 | 2117 | 2016-12-29 | 2017-12-28 |

General used equipment

| Item | Test Equipment | Manufacturer | Model No. | Serial No. | Cal. date | Cal.Due date |
|------|-------------------------------|-----------------------------|------------|--|------------|--------------|
| 1 | Digital pressure meter | YONGZHI | DYM3-01 | 101012 | 2017-03-02 | 2018-03-01 |
| 2 | Temperature&humidity recorder | ShangHai weather meter work | ZJ 1-2B | 84320600 803136, F304020153 ,20101201F S100A6K,20 1106117 | 2016-08-03 | 2017-08-02 |
| 3 | Digital Multimeter | FLUKE | 17B | 19720439 | 2017-01-13 | 2018-01-12 |
| 4 | Autoformer regulator | Guangzhou bao de | TDGC2-5KVA | / | / | / |
| 5 | CLAMP METER | FLUKE | 316 | 2503030971 | 2017-01-13 | 2018-01-12 |

6 Electromagnetic Interference Test Results

6.1 Conducted Emissions on Mains Terminals

Test Frequency: 150 kHz to 30 MHz

Detector: Peak for pre-scan (9 kHz Resolution Bandwidth from 150 kHz to 30 MHz)

Class / Limit: Table 2-Class B for EN 55032

| Frequency range (MHz) | Class B Limits (dB (μV)) | |
|---|--------------------------|----------|
| | Quasi-peak | Average |
| 0.15 to 0.50 | 66 to 56 | 56 to 46 |
| 0.50 to 5 | 56 | 46 |
| 5 to 30 | 60 | 50 |
| Note1: The limit decreases linearly with the logarithm of the frequency in the range 0.15 MHz to 0.50MHz. | | |
| Note2: The lower limit is applicable at the transition frequency. | | |

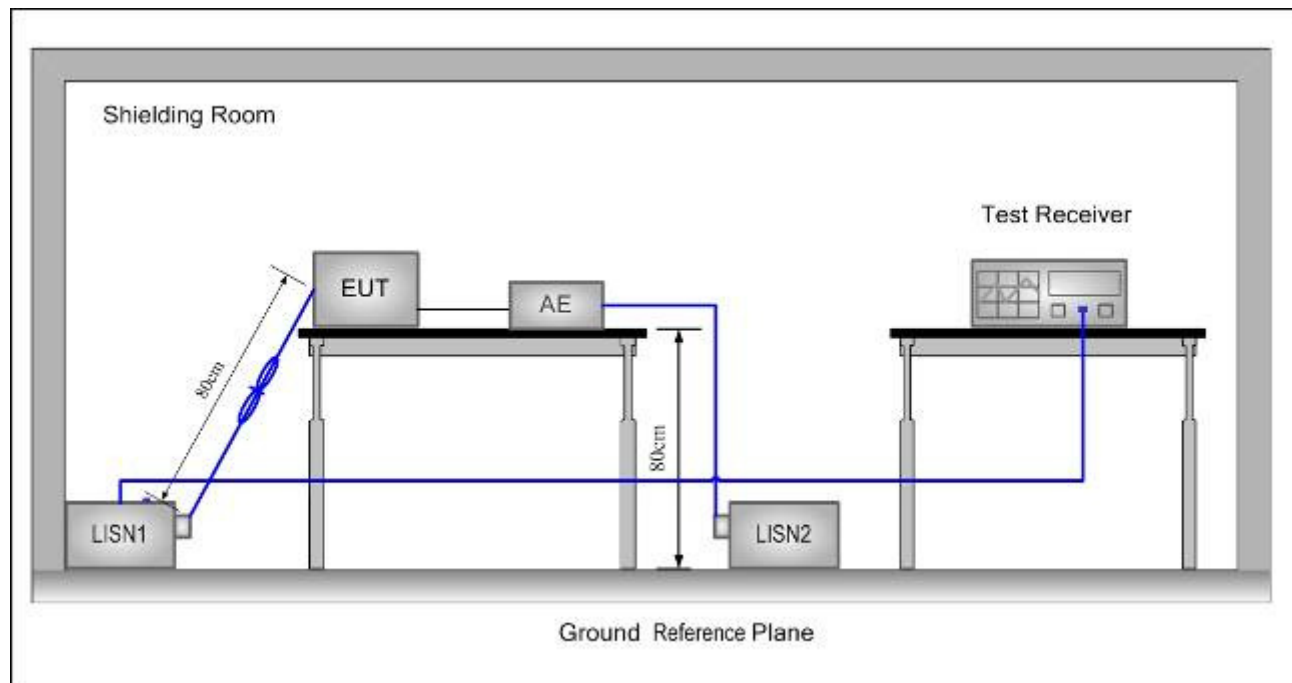
6.1.1 E.U.T. Operation

Test mode: a; Monitoring mode: Keep EUT monitoring continual.

Pre-scan was performed with peak detected on all ports, Quasi-peak & average measurements were performed at the frequencies at which maximum peak emission level were detected.

Please see the attached Quasi-peak and Average test results.

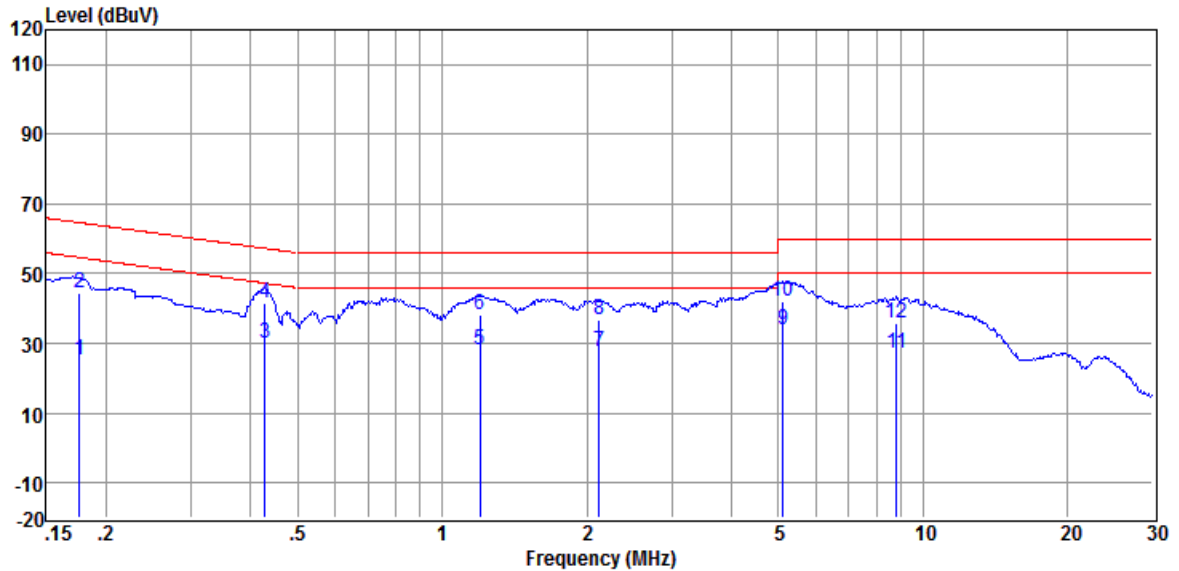
6.1.2 Test Setup and Procedure



1. The mains terminal disturbance voltage was measured with the EUT in a shielded room.
2. The EUT was connected to AC power source through a LISN 1 (Line Impedance Stabilization Network) which provides a $50\Omega/50\mu\text{H} + 5\Omega$ linear impedance. The power cables of all other units of the EUT was connected to a second LISN, which was bonded to the ground reference plane in the same way as the LISN for the unit being measured. A multiple socket outlet strip was used to connect multiple power cables to a single LISN provided the rating of the LISN was not exceeded
3. The tabletop EUT was placed upon a non-metallic table 0.8m above the ground reference plane. And for floor-standing arrangement, the EUT was placed on the horizontal ground reference plane, but separated from metallic contact with the ground reference plane by 0.1m of insulation.
4. The test was performed with a vertical ground reference plane. The rear of the EUT shall be 0.4 m from the vertical ground reference plane. The vertical ground reference plane was bonded to the horizontal ground reference plane. The LISN was placed 0.8 m from the boundary of the unit under test and bonded to a ground reference plane for LISN mounted on top of the ground reference plane. This distance was between the closest points of the LISN and the EUT. The mains lead of EUT excess 0.8m was folded back and forth parallel to the lead so as to form a horizontal bundle with a length between 0.3m and 0.4m. All other units of the EUT and associated equipment was at least 0,8 m from the LISN.

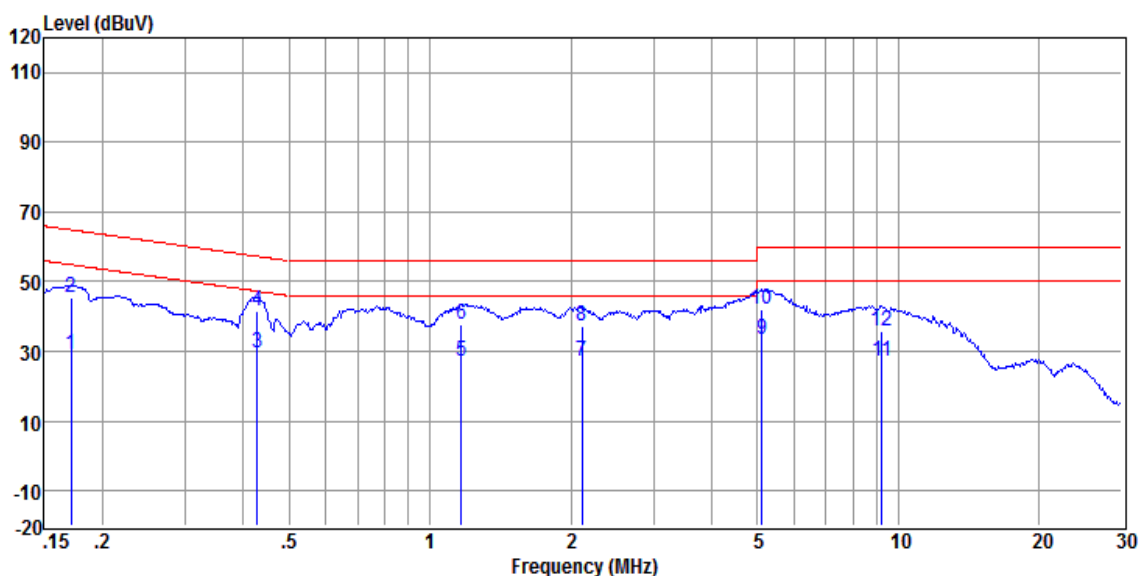
6.1.3 Measurement Data

Mode:a;Line:Live Line



| Item | Freq. | Read Level | LISN Factor | Cable Loss | Level | Limit Line | Over Limit | Detector |
|--------|-------|------------|-------------|------------|--------|------------|------------|----------|
| (Mark) | (MHz) | (dBμV) | (dB) | (dB) | (dBμV) | (dBμV) | (dB) | |
| 1 | 0.176 | 15.15 | 0.07 | 10.15 | 25.37 | 54.68 | -29.31 | Average |
| 2 | 0.176 | 34.09 | 0.07 | 10.15 | 44.31 | 64.68 | -20.37 | QP |
| 3 | 0.428 | 19.53 | 0.10 | 10.17 | 29.80 | 47.29 | -17.49 | Average |
| 4 | 0.428 | 31.13 | 0.10 | 10.17 | 41.40 | 57.29 | -15.89 | QP |
| 5 | 1.197 | 17.62 | 0.08 | 10.18 | 27.88 | 46.00 | -18.12 | Average |
| 6 | 1.197 | 27.77 | 0.08 | 10.18 | 38.03 | 56.00 | -17.97 | QP |
| 7 | 2.121 | 17.15 | 0.08 | 10.19 | 27.42 | 46.00 | -18.58 | Average |
| 8 | 2.121 | 26.60 | 0.08 | 10.19 | 36.87 | 56.00 | -19.13 | QP |
| 9 | 5.112 | 23.35 | 0.15 | 10.25 | 33.75 | 50.00 | -16.25 | Average |
| 10 | 5.112 | 31.61 | 0.15 | 10.25 | 42.01 | 60.00 | -17.99 | QP |
| 11 | 8.822 | 16.53 | 0.18 | 10.24 | 26.95 | 50.00 | -23.05 | Average |
| 12 | 8.822 | 25.23 | 0.18 | 10.24 | 35.65 | 60.00 | -24.35 | QP |

Mode:a;Neutral Line:



| Item | Freq. | Read Level | LISN Factor | Cable Loss | Level | Limit Line | Over Limit | Detector |
|--------|-------|------------|-------------|------------|--------|------------|------------|----------|
| (Mark) | (MHz) | (dBμV) | (dB) | (dB) | (dBμV) | (dBμV) | (dB) | |
| 1 | 0.171 | 18.84 | 0.05 | 10.15 | 29.04 | 54.90 | -25.86 | Average |
| 2 | 0.171 | 35.07 | 0.05 | 10.15 | 45.27 | 64.90 | -19.63 | QP |
| 3 | 0.428 | 19.14 | 0.04 | 10.17 | 29.35 | 47.29 | -17.94 | Average |
| 4 | 0.428 | 31.13 | 0.04 | 10.17 | 41.34 | 57.29 | -15.95 | QP |
| 5 | 1.166 | 16.94 | 0.05 | 10.18 | 27.17 | 46.00 | -18.83 | Average |
| 6 | 1.166 | 27.27 | 0.05 | 10.18 | 37.50 | 56.00 | -18.50 | QP |
| 7 | 2.110 | 17.10 | 0.07 | 10.19 | 27.36 | 46.00 | -18.64 | Average |
| 8 | 2.110 | 26.75 | 0.07 | 10.19 | 37.01 | 56.00 | -18.99 | QP |
| 9 | 5.112 | 23.02 | 0.18 | 10.25 | 33.45 | 50.00 | -16.55 | Average |
| 10 | 5.112 | 31.72 | 0.18 | 10.25 | 42.15 | 60.00 | -17.85 | QP |
| 11 | 9.204 | 16.62 | 0.20 | 10.20 | 27.02 | 50.00 | -22.98 | Average |
| 12 | 9.204 | 25.40 | 0.20 | 10.20 | 35.80 | 60.00 | -24.20 | QP |

Level = Read Level + LISN Factor + Cable loss

6.2 Conducted Emissions at Telecommunication ports

Test Frequency: 150 kHz to 30 MHz
 Detector: Peak for pre-scan
 Quasi-Peak and Average at frequency with maximum peak
 (9 kHz resolution bandwidth)
 Class / Limit: Table 4-Class B for EN 55032

| Frequency range (MHz) | Class B Voltage limits (dB (μV)) | |
|-----------------------|----------------------------------|----------|
| | Quasi-peak | Average |
| 0.15 to 0.50 | 84 to 74 | 74 to 64 |
| 0.50 to 30 | 74 | 64 |

NOTE 1: The limits decrease linearly with the logarithm of the frequency in the range 0.15 MHz to 0.5 MHz.
 NOTE 2: The lower limit is applicable at the transition frequency.

6.2.1 E.U.T. Operation

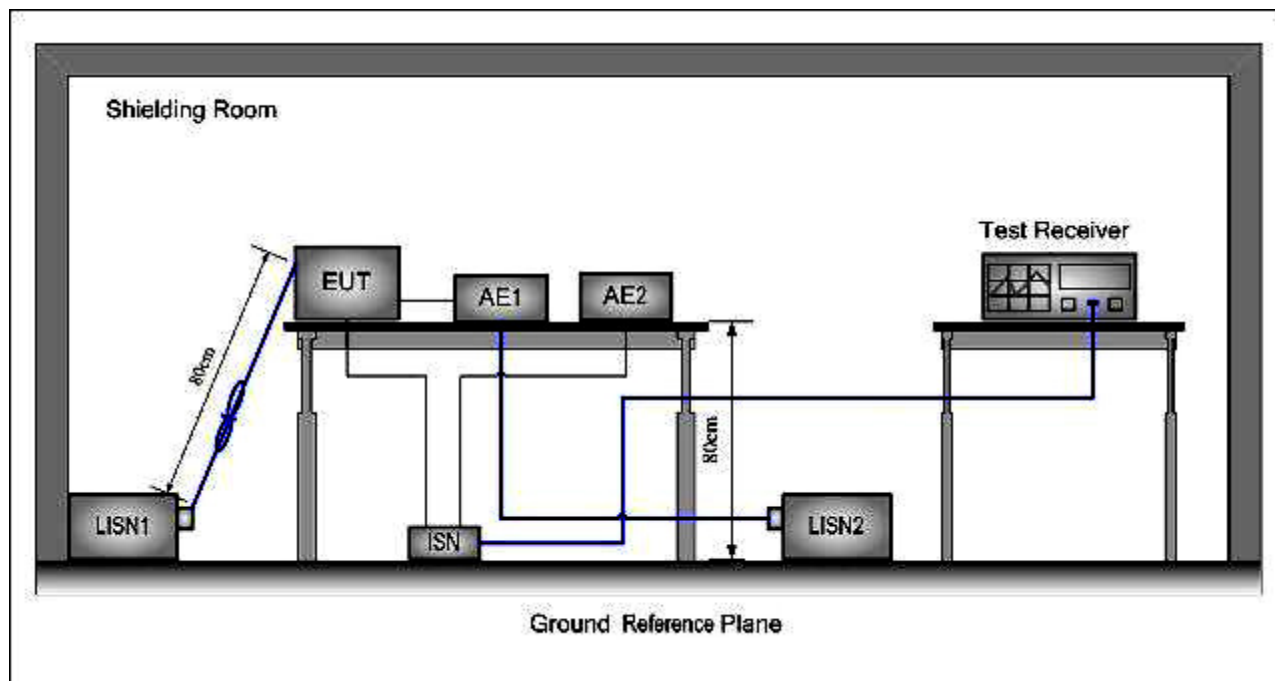
Test mode: a; Monitoring mode: Keep EUT monitoring continual.

Remark: Pre-tested each rate of LAN port (10M, 100M) test it since there was no worst case in this report.

Pre-scan was performed with peak detected on all ports, Quasi-peak & average measurements were performed at the frequencies at which maximum peak emission level were detected.

Please see the attached Quasi-peak and Average test results.

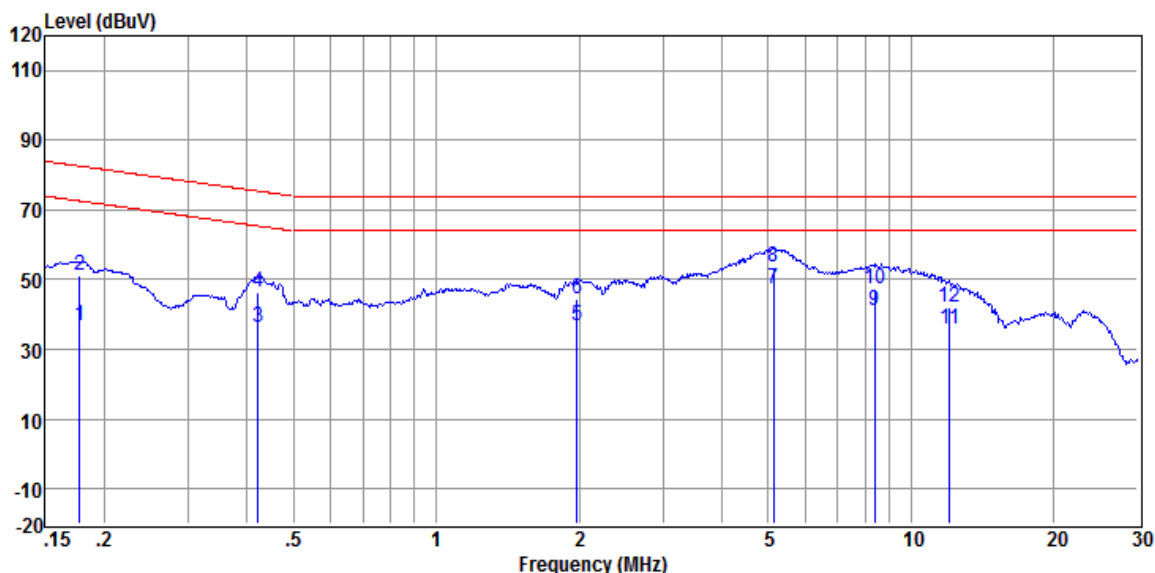
6.2.2 Test Setup and Procedure



1. The mains terminal disturbance voltage test was conducted in a shielded room.
2. The EUT was connected to nominal power supply through an LISN 1 (Line Impedance Stabilization Network) which provides a $50\Omega/50\mu\text{H} + 5\Omega$ linear impedance. The power cables of all other units of the EUT was connected to LISN2, which was bonded to the ground reference plane in the same way as the LISN for the unit being measured. A multiple socket outlet strip was used to connect multiple power cables to a single LISN provided the rating of the LISN was not exceeded.
3. The tabletop EUT was placed upon a non-metallic table 0.8m above the ground reference plane. And for floor-standing arrangement, the EUT was placed on the horizontal ground reference plane, but separated from metallic contact with the ground reference plane by 0.1m of insulation.
4. The test was performed with a vertical ground reference plane. The rear of the EUT shall be 0.4 m from the vertical ground reference plane. The vertical ground reference plane was bonded to the horizontal ground reference plane. The LISN was placed 0.8 m from the boundary of the unit under test and bonded to a ground reference plane for LISNs mounted on top of the ground reference plane. This distance was between the closest points of the LISN and the EUT. All other units of the EUT and associated equipment was at least 0.8 m from the LISN.
5. The ISNs were used for measurements on telecom ports, they were nominally 0.8 m from the EUT and bonded to a ground reference plane. Other units of the equipment under test shall be at least 0.8 m from the ISN.

6.2.3 Measurement Data

Mode:a; LAN port:



| Item | Freq. | Read Level | LISN Factor | Cable Loss | Level | Limit Line | Over Limit | Detector |
|--------|--------|------------|-------------|------------|--------|------------|------------|----------|
| (Mark) | (MHz) | (dBμV) | (dB) | (dB) | (dBμV) | (dBμV) | (dB) | |
| 1 | 0.178 | 16.70 | 9.70 | 10.15 | 36.55 | 72.59 | -36.04 | Average |
| 2 | 0.178 | 31.37 | 9.70 | 10.15 | 51.22 | 82.59 | -31.37 | QP |
| 3 | 0.421 | 16.68 | 9.48 | 10.17 | 36.33 | 65.42 | -29.09 | Average |
| 4 | 0.421 | 26.78 | 9.48 | 10.17 | 46.43 | 75.42 | -28.99 | QP |
| 5 | 1.980 | 17.36 | 9.27 | 10.19 | 36.82 | 64.00 | -27.18 | Average |
| 6 | 1.980 | 24.78 | 9.27 | 10.19 | 44.24 | 74.00 | -29.76 | QP |
| 7 | 5.139 | 27.71 | 9.20 | 10.25 | 47.16 | 64.00 | -16.84 | Average |
| 8 | 5.139 | 34.17 | 9.20 | 10.25 | 53.62 | 74.00 | -20.38 | QP |
| 9 | 8.367 | 21.51 | 9.20 | 10.29 | 41.00 | 64.00 | -23.00 | Average |
| 10 | 8.367 | 27.70 | 9.20 | 10.29 | 47.19 | 74.00 | -26.81 | QP |
| 11 | 12.060 | 16.47 | 9.22 | 10.23 | 35.92 | 64.00 | -28.08 | Average |
| 12 | 12.060 | 22.69 | 9.22 | 10.23 | 42.14 | 74.00 | -31.86 | QP |

Level = Read Level + LISN/ISN Factor + Cable Loss

6.3 Radiated Emissions, 30MHz to 1GHz

Detector: Peak for pre-scan (120 kHz resolution bandwidth)

Class / Limit: Table 6-Class B for EN 55032

For 3m

| Frequency range | Quasi-peak limits (Class B) |
|--|-----------------------------|
| MHz | dB (μV/m) |
| 30 to 230 | 40 |
| 230 to 1000 | 47 |
| At transitional frequencies the lower limit applies. | |

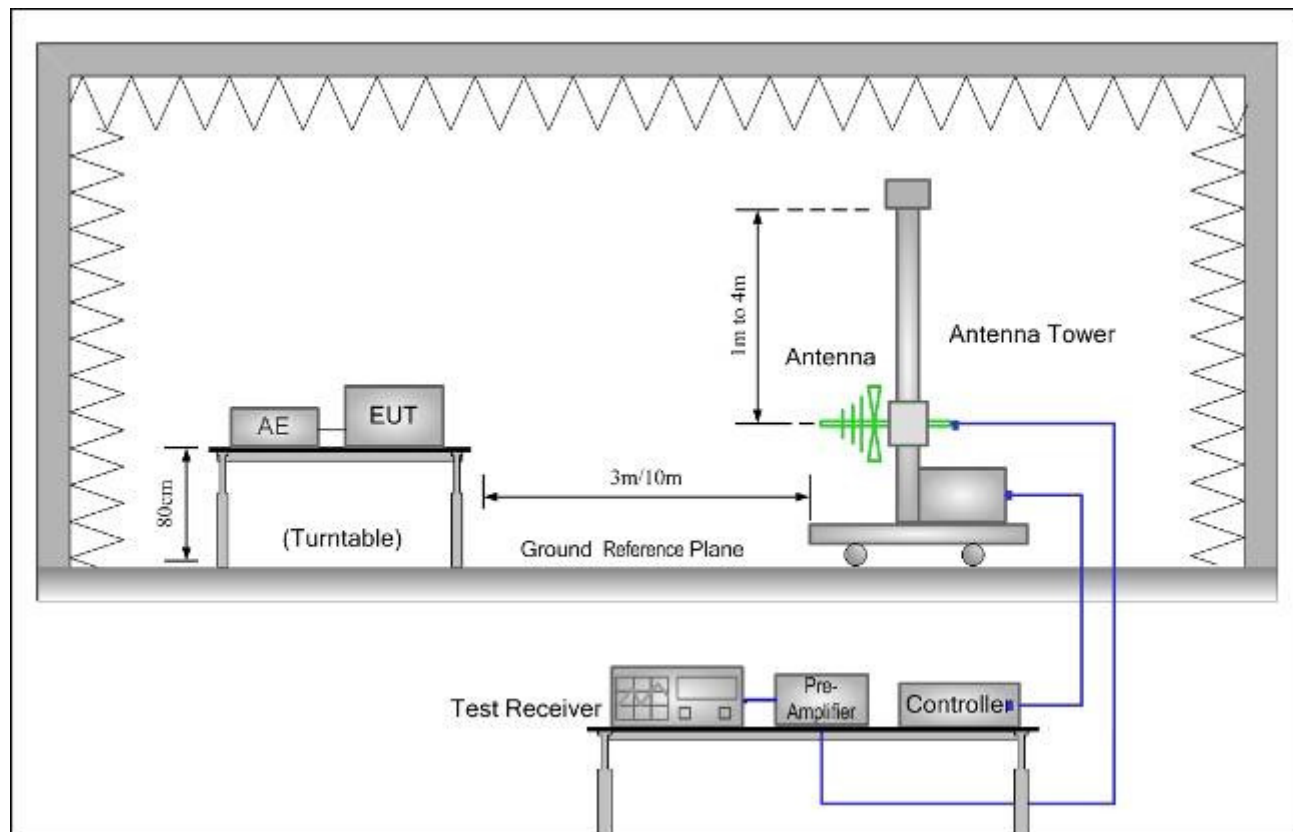
6.3.1 E.U.T. Operation

Test mode: a; Monitoring mode: Keep EUT monitoring continual.

Pre-scan was performed with peak detected on all ports, Quasi-peak measurements was performed at the frequencies at which maximum peak emission level were detected.

Please see the attached Quasi-peak test results.

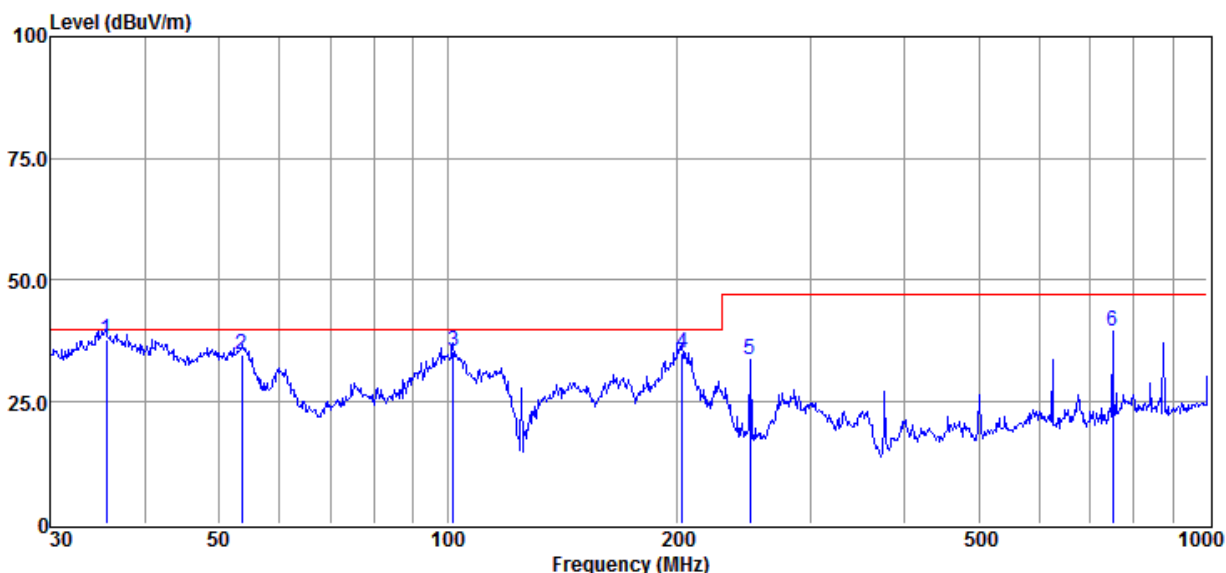
6.3.2 Test Setup and Procedure



1. The radiated emissions test was conducted in a semi-anechoic chamber.
2. The EUT was connected to AC power source through a mains power outlet which was bonded to the ground reference plane; The mains cables shall drape to the ground reference plane.
3. The tabletop EUT was placed upon a non-metallic table 0.8m above the ground reference plane. And for floor-standing arrangement, the EUT was placed on the horizontal ground reference plane, but separated from metallic contact with the ground reference plane by 0.1m of insulation.
4. Before final measurements of radiated emissions, a pre-scan was performed in the spectrum mode with the peak detector to find out the maximum emission spectrum signature data plots of the EUT.
5. The frequencies of maximum emission were determined in the final radiated emissions measurement, the physical arrangement of the test system and associated cabling was varied in order to determine the effect on the EUT's emissions in amplitude, direction and frequency. At each frequency, the EUT was rotated 360°, and the antenna was raised and lowered from 1 to 4 meters in order to determine the maximum disturbance. Measurements were performed for both horizontal and vertical antenna polarization.

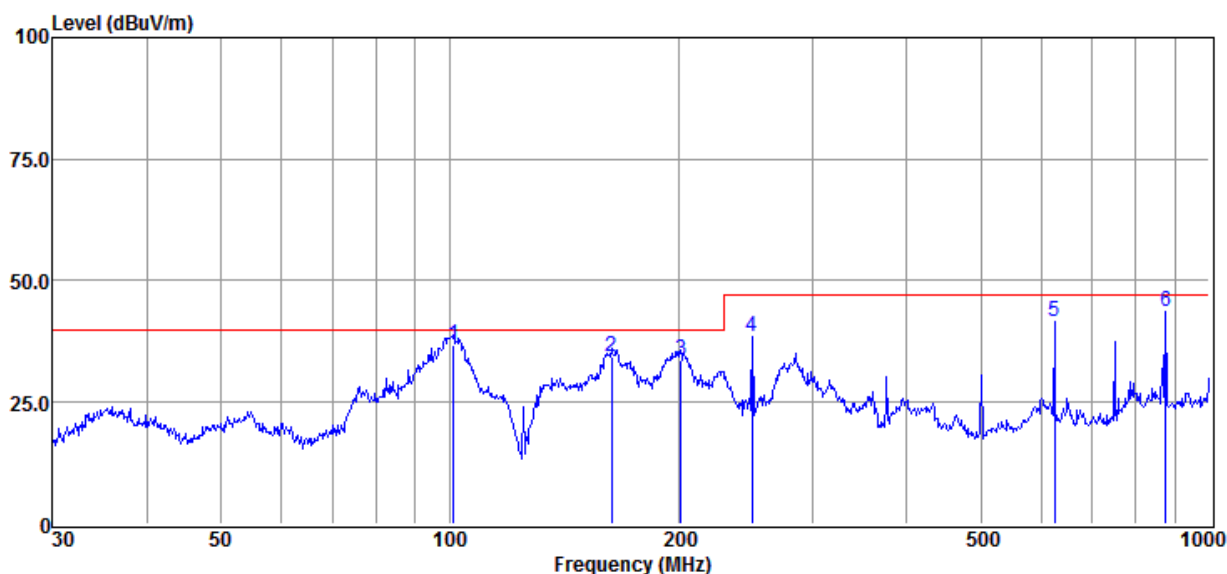
6.3.3 Measurement Data

Model:a;Vertical:



| Item | Freq. | Read Level | Antenna Factor | Preamplifier Factor | Cable Loss | Result Level | Limit Line | Over Limit | Detector |
|--------|--------|------------|----------------|---------------------|------------|--------------|------------|------------|----------|
| (Mark) | (MHz) | (dBμV) | (dB/m) | (dB) | (dB) | (dBμV/m) | (dBμV/m) | (dB) | |
| 1 | 35.50 | 54.01 | 12.60 | 28.90 | 0.21 | 37.92 | 40.00 | -2.08 | QP |
| 2 | 53.51 | 49.95 | 13.38 | 28.80 | 0.27 | 34.80 | 40.00 | -5.20 | QP |
| 3 | 101.64 | 53.88 | 9.50 | 28.60 | 0.46 | 35.24 | 40.00 | -4.76 | QP |
| 4 | 203.52 | 51.90 | 10.59 | 28.10 | 0.70 | 35.09 | 40.00 | -4.91 | QP |
| 5 | 250.30 | 48.68 | 12.10 | 27.90 | 0.77 | 33.65 | 47.00 | -13.35 | QP |
| 6 | 750.11 | 45.07 | 21.97 | 29.24 | 1.88 | 39.68 | 47.00 | -7.32 | QP |

Model:a;Horizontal:



| Item | Freq. | Read Level | Antenna Factor | Preamp Factor | Cable Loss | Result Level | Limit Line | Over Limit | Detector |
|--------|--------|------------|----------------|---------------|------------|--------------|------------|------------|----------|
| (Mark) | (MHz) | (dBμV) | (dB/m) | (dB) | (dB) | (dBμV/m) | (dBμV/m) | (dB) | |
| 1 | 101.29 | 55.60 | 9.44 | 28.60 | 0.46 | 36.90 | 40.00 | -3.10 | QP |
| 2 | 163.18 | 49.81 | 12.13 | 28.37 | 0.64 | 34.21 | 40.00 | -5.79 | QP |
| 3 | 201.39 | 50.37 | 10.71 | 28.10 | 0.69 | 33.67 | 40.00 | -6.33 | QP |
| 4 | 250.30 | 53.37 | 12.10 | 27.90 | 0.77 | 38.34 | 47.00 | -8.66 | QP |
| 5 | 625.08 | 49.38 | 20.15 | 29.26 | 1.41 | 41.68 | 47.00 | -5.32 | QP |
| 6 | 875.25 | 47.29 | 23.00 | 28.99 | 2.35 | 43.65 | 47.00 | -3.35 | QP |

Result Level = Read Level + Antenna Factor + Cable loss - Preamp Factor

6.4 Radiated Emissions, 1GHz to 6GHz

Detector: Peak for pre-scan
Peak and Average if maximised peak within 6 dB of limit
(1 MHz resolution bandwidth)

Class / Limit: Table 8-Class B for EN 55032

| Frequency range (GHz) | Class B Limits | |
|-----------------------|---------------------------|-------------------------|
| | Average limit (dB (μV/m)) | Peak limits (dB (μV/m)) |
| 1 to 3 | 50 | 70 |
| 3 to 6 | 54 | 74 |

At transitional frequencies the lower limit applies.

Remark:

The highest internal source of an EUT is defined as the highest frequency generated or used within the EUT or on which the EUT operates or tunes.

1. If the highest frequency of the internal sources of the EUT is less than 108 MHz, the measurement shall only be made up to 1 GHz.
2. If the highest frequency of the internal sources of the EUT is between 108 MHz and 500 MHz, the measurement shall only be made up to 2 GHz.
3. If the highest frequency of the internal sources of the EUT is between 500 MHz and 1 GHz, measurement shall only be made up to 5 GHz.
4. If the highest frequency of the internal sources of the EUT is above 1 GHz, the measurement shall be made up to 5 times the highest frequency or 6 GHz, whichever is less.

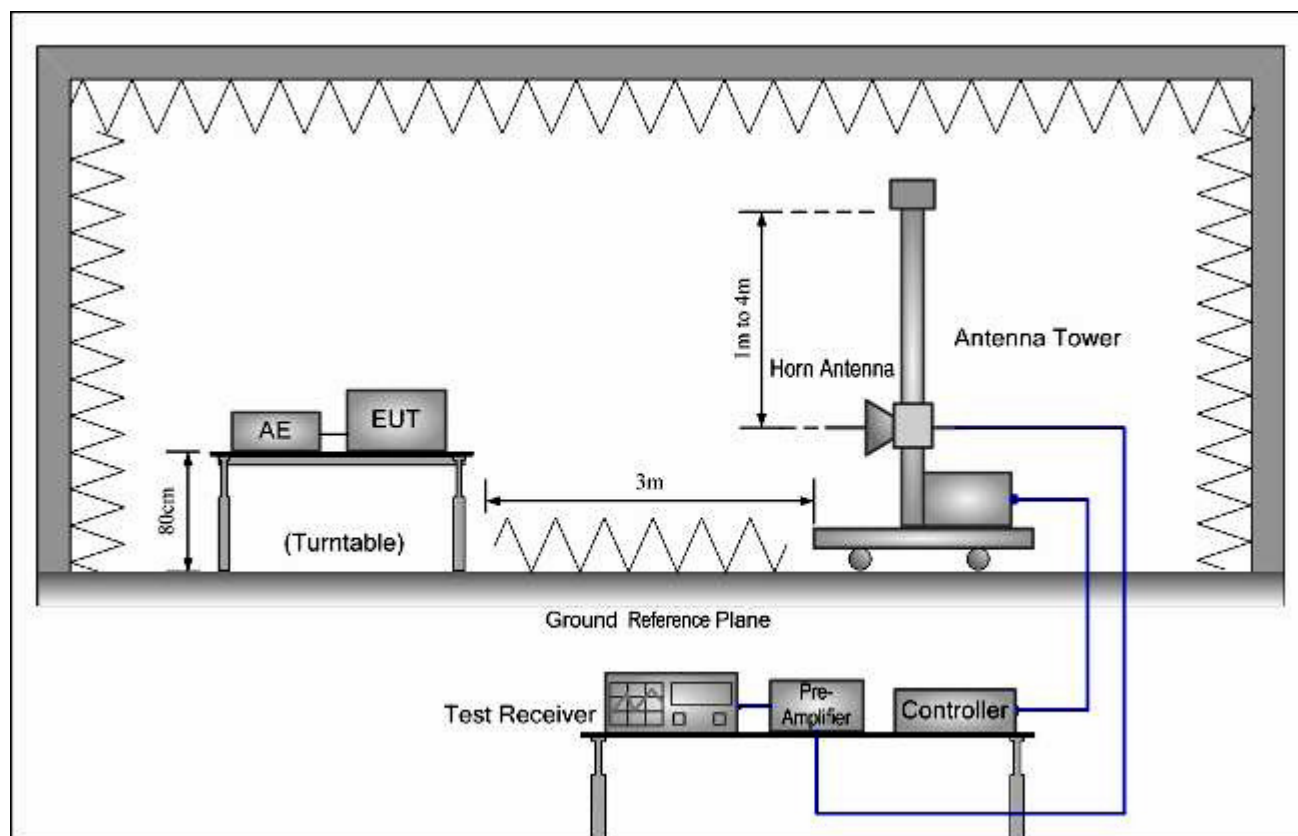
6.4.1 E.U.T. Operation

Test mode: a; Monitoring mode: Keep EUT monitoring continual.

Pre-scan was performed with peak detected on all ports, Peak & average measurements were performed at the frequencies at which maximum peak emission level were detected.

Please see the attached Peak and Average test results.

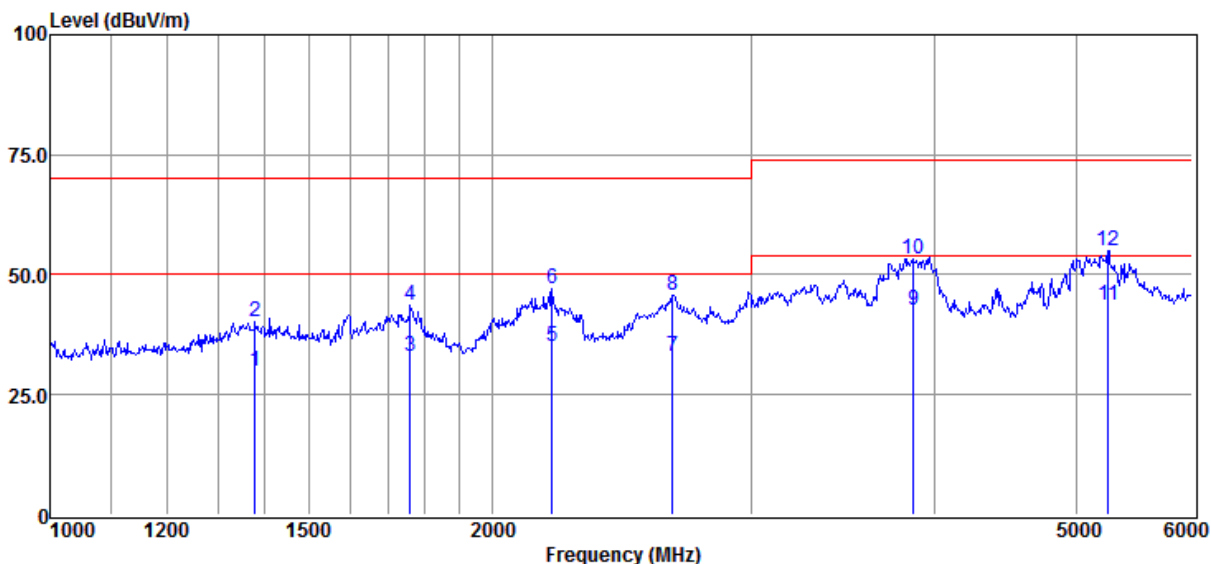
6.4.2 Test Setup and Procedure



1. The radiated emissions test was conducted in a fully-anechoic chamber.
2. Horn antenna was used for the frequency above 1GHz
3. The EUT was connected to nominal power supply through a mains power outlet which was bonded to the ground reference plane; The mains cables were draped to the ground reference plane. The tabletop EUT was placed upon a non-metallic table 0.8m above the ground reference plane. And for floor-standing arrangement, the EUT was placed on the horizontal ground reference plane, but separated from metallic contact with the ground reference plane by 0.1m of insulation.
4. Before final measurements of radiated emissions, a pre-scan was performed in the spectrum mode with the peak detector to find out the maximum emission spectrum plots of the EUT.
5. The frequencies of maximum emission were determined in the final radiated emissions measurement. At each frequency, the EUT was rotated 360°, and the antenna was raised and lowered from 1 to 4 meters in order to determine the maximum disturbance. Measurements were performed for both horizontal and vertical antenna polarization.

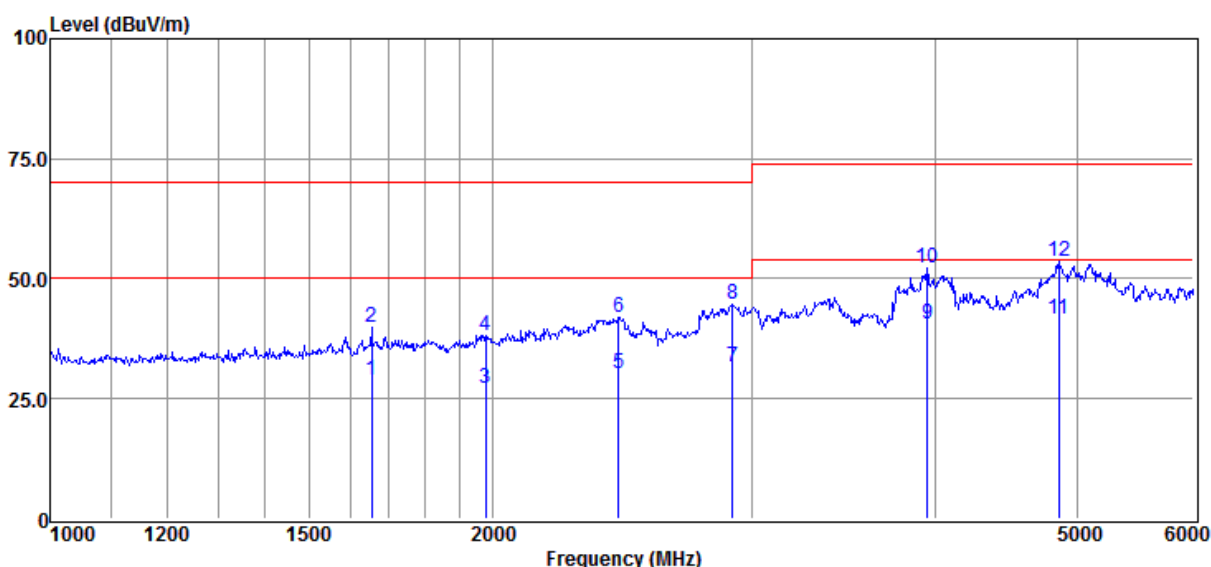
6.4.3 Measurement Data

Mode:a;Vertical:



| Item | Freq. | Read Level | Antenna Factor | Preamplifier Factor | Cable Loss | Result Level | Limit Line | Over Limit | Detector |
|--------|---------|------------|----------------|---------------------|------------|--------------|------------|------------|----------|
| (Mark) | (MHz) | (dBμV) | (dB/m) | (dB) | (dB) | (dBμV/m) | (dBμV/m) | (dB) | |
| 1 | 1378.13 | 41.63 | 24.90 | 40.58 | 3.82 | 29.77 | 50.00 | -20.23 | Average |
| 2 | 1378.13 | 52.04 | 24.90 | 40.58 | 3.82 | 40.18 | 70.00 | -29.82 | Peak |
| 3 | 1758.40 | 43.41 | 26.16 | 40.91 | 4.26 | 32.92 | 50.00 | -17.08 | Average |
| 4 | 1758.40 | 54.02 | 26.16 | 40.91 | 4.26 | 43.53 | 70.00 | -26.47 | Peak |
| 5 | 2195.88 | 44.14 | 27.39 | 41.11 | 4.49 | 34.91 | 50.00 | -15.09 | Average |
| 6 | 2195.88 | 56.37 | 27.39 | 41.11 | 4.49 | 47.14 | 70.00 | -22.86 | Peak |
| 7 | 2655.17 | 41.09 | 27.96 | 40.91 | 4.82 | 32.96 | 50.00 | -17.04 | Average |
| 8 | 2655.17 | 53.92 | 27.96 | 40.91 | 4.82 | 45.79 | 70.00 | -24.21 | Peak |
| 9 | 3875.10 | 43.99 | 32.35 | 40.16 | 6.34 | 42.52 | 54.00 | -11.48 | Average |
| 10 | 3875.10 | 54.72 | 32.35 | 40.16 | 6.34 | 53.25 | 74.00 | -20.75 | Peak |
| 11 | 5254.94 | 41.65 | 36.19 | 41.58 | 7.39 | 43.65 | 54.00 | -10.35 | Average |
| 12 | 5254.94 | 53.14 | 36.19 | 41.58 | 7.39 | 55.14 | 74.00 | -18.86 | Peak |

Mode:a;Horizontal:



| Item | Freq. | Read Level | Antenna Factor | Preamplifier Factor | Cable Loss | Result Level | Limit Line | Over Limit | Detector |
|--------|---------|------------|----------------|---------------------|------------|--------------|------------|------------|----------|
| (Mark) | (MHz) | (dBμV) | (dB/m) | (dB) | (dB) | (dBμV/m) | (dBμV/m) | (dB) | |
| 1 | 1654.48 | 39.77 | 25.71 | 40.76 | 4.06 | 28.78 | 50.00 | -21.22 | Average |
| 2 | 1654.48 | 50.77 | 25.71 | 40.76 | 4.06 | 39.78 | 70.00 | -30.22 | Peak |
| 3 | 1979.14 | 36.88 | 27.02 | 41.20 | 4.37 | 27.07 | 50.00 | -22.93 | Average |
| 4 | 1979.14 | 47.90 | 27.02 | 41.20 | 4.37 | 38.09 | 70.00 | -31.91 | Peak |
| 5 | 2436.36 | 38.72 | 27.72 | 40.98 | 4.84 | 30.30 | 50.00 | -19.70 | Average |
| 6 | 2436.36 | 50.41 | 27.72 | 40.98 | 4.84 | 41.99 | 70.00 | -28.01 | Peak |
| 7 | 2914.45 | 38.49 | 28.93 | 40.84 | 5.17 | 31.75 | 50.00 | -18.25 | Average |
| 8 | 2914.45 | 51.33 | 28.93 | 40.84 | 5.17 | 44.59 | 70.00 | -25.41 | Peak |
| 9 | 3952.23 | 41.32 | 32.54 | 40.10 | 6.90 | 40.66 | 54.00 | -13.34 | Peak |
| 10 | 3952.23 | 52.78 | 32.54 | 40.10 | 6.90 | 52.12 | 74.00 | -21.88 | Average |
| 11 | 4856.57 | 39.14 | 36.11 | 41.59 | 8.02 | 41.68 | 54.00 | -12.32 | Average |
| 12 | 4856.57 | 51.03 | 36.11 | 41.59 | 8.02 | 53.57 | 74.00 | -20.43 | Peak |

Result Level = Read Level + Antenna Factor + Cable loss - PRM Factor

6.5 Harmonics Test Result

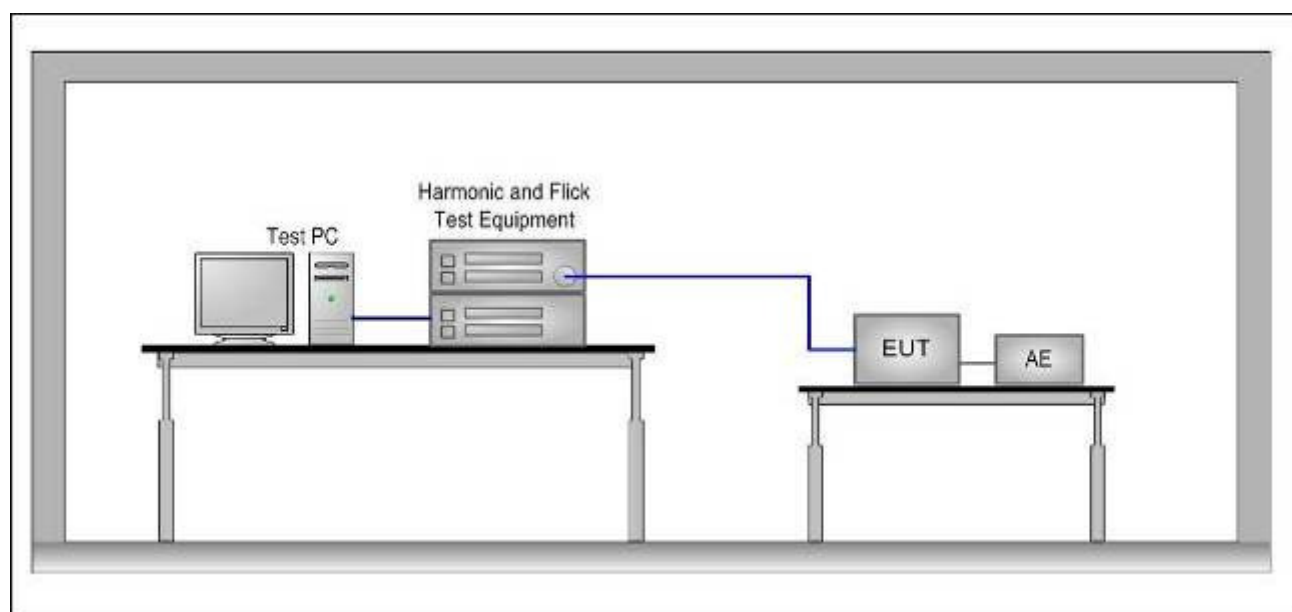
Measurement Time: 2.5mins

Class / Severity: Class A

6.5.1 E.U.T. Operation

Test mode: N/A

6.5.2 Test Setup and Procedure



1. The EUT was tested with the equipment configured to its rated current.
2. The measurements were carried out under steady conditions. When a piece of EUT is brought into operation or is taken out of operation, manually or automatically, harmonic currents and power are not taken into account at first 10s following the switching event. EUT shall not be in standby mode for more than 10% of any observation period.
3. Harmonics of the fundamental current were measured using a digital power meter with an analogue output and frequency analyser which was integrated in the harmonic & flicker test system.
4. For each harmonic order, measure the 1,5 s smoothed r.m.s. harmonic current in each DFT time window and calculate the arithmetic average of the measured values from the DFT time windows, over the entire observation period. Each harmonic order, all 1.5 s smoothed r.m.s. harmonic current values and the average values for the individual harmonic currents, taken over the entire test observation period shall be less than or equal to the applicable limits.

6.5.3 Measurement Data

There is no need for Harmonics test to be performed on this product (rated power is less than 75W) in accordance with EN 61000-3-2.

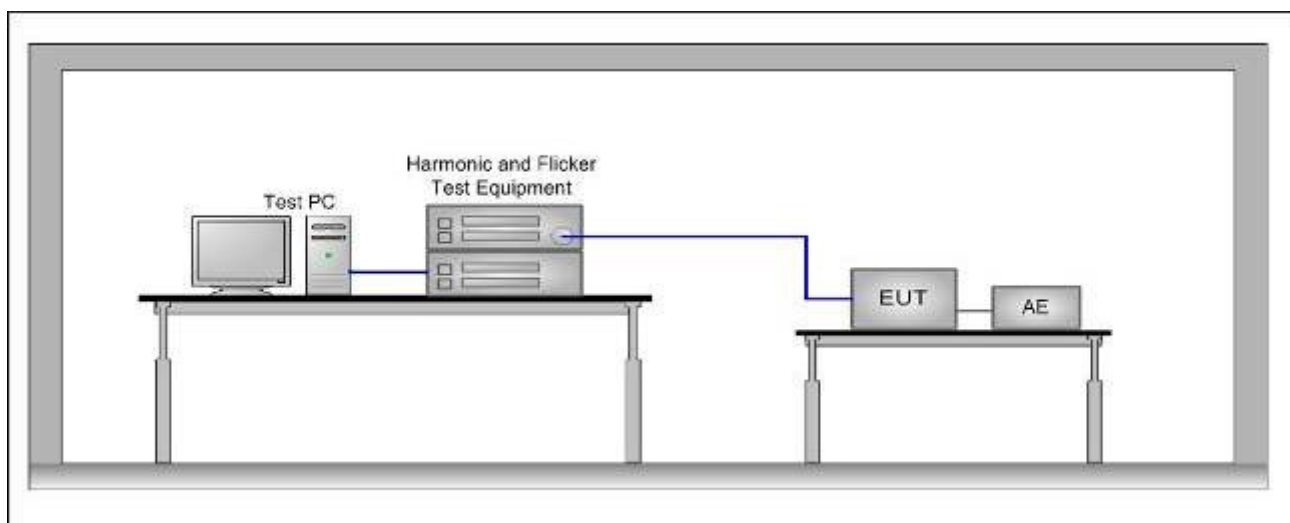
6.6 Flicker Test Result

Measurement Time: 10 mins
Class / Severity: Clause 5 of EN 61000-3-3

6.6.1 E.U.T. Operation

Test mode: a; Monitoring mode: Keep EUT monitoring continual.
Note: "Pst and Plt requirements shall not be applied to voltage changes caused by manual switching.
The limits shall not be applied to voltage changes associated with emergency switching or emergency interruptions."
Please also refer to Annex A (Application of limits and type test conditions) for details in EN 61000-3-3.

6.6.2 Test Setup and Procedure



1. The test supply voltage (open-circuit voltage) was the rated voltage of the EUT. The Test voltage: was maintained within $\pm 2\%$ of the nominal value. The frequency was $50\text{ Hz} \pm 0.5\%$.
2. The voltage fluctuations and flicker were measured at the supply terminals of the EUT.
3. The observation period, T_p , for the assessment of flicker values by flicker measurement, flicker simulation, or analytical method was:
 - for Pst, $T_p = 10\text{ min}$;
 - for Plt, $T_p = 2\text{ h}$.

The observation period included that part of the whole operation cycle in which the EUT produces the most unfavorable sequence of voltage changes.



6.6.3 Measurement Data

Mode:a;

| | | | | |
|---------------------------------|---------------------|------------------|-------|-------------------|
| Vrms at the end of test (Volt): | 229.82 ^u | | | |
| T-max (mS): | 0 | Test limit (mS): | 500.0 | Pass ^u |
| Highest dc (%): | 0.00 | Test limit (%): | 3.30 | Pass ^u |
| Highest dmax (%): | 0.00 | Test limit (%): | 4.00 | Pass ^u |
| Highest Pst (10 min. period): | 0.229 | Test limit: | 1.000 | Pass |
| Highest Plt (2 hr. period): | 0.100 | Test limit: | 0.650 | Pass ^u |

7 Electromagnetic Susceptibility Test Results

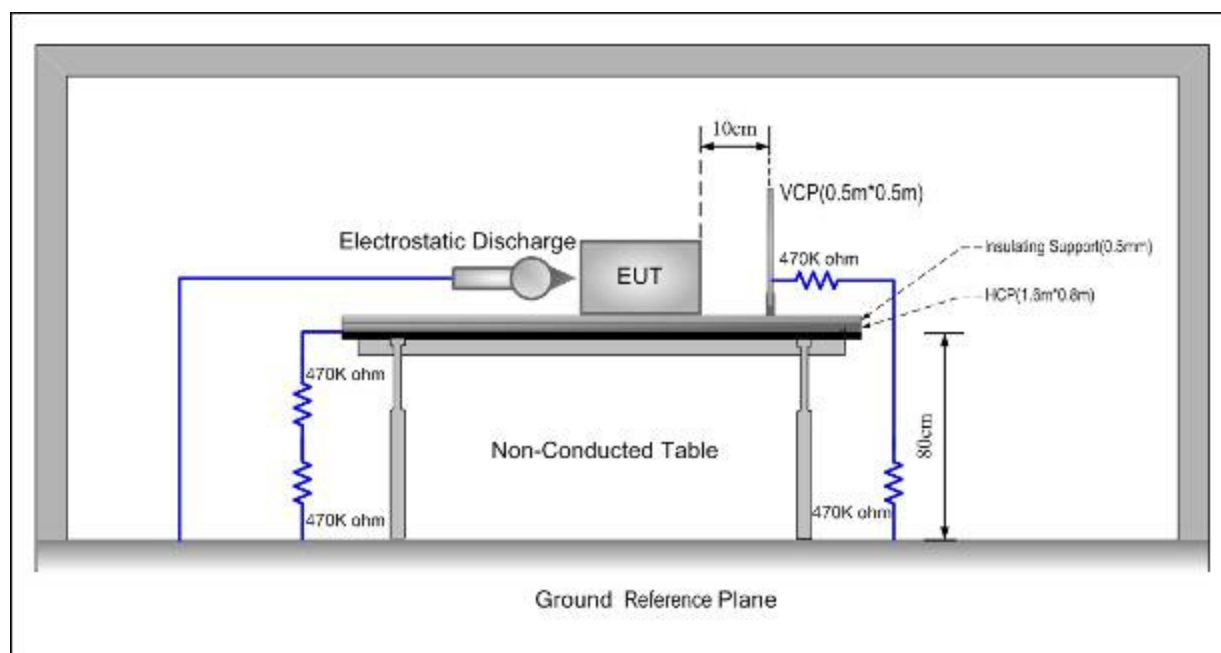
7.1 Performance Criteria Description in Clause 7 of EN 55024

| | |
|---------------------|---|
| Criterion A: | The equipment shall continue to operate as intended without operator intervention. No degradation of performance or loss of function is allowed below a performance level specified by the manufacturer when the equipment is used as intended. The performance level may be replaced by a permissible loss of performance. If the minimum performance level or the permissible performance loss is not specified by the manufacturer, then either of these may be derived from the product description and documentation, and by what the user may reasonably expect from the equipment if used as intended. |
| Criterion B: | After the test, the equipment shall continue to operate as intended without operator intervention. No degradation of performance or loss of function is allowed, after the application of the phenomena below a performance level specified by the manufacturer, when the equipment is used as intended. The performance level may be replaced by a permissible loss of performance. During the test, degradation of performance is allowed. However, no change of operating state or stored data is allowed to persist after the test. If the minimum performance level (or the permissible performance loss) is not specified by the manufacturer, then either of these may be derived from the product description and documentation, and by what the user may reasonably expect from the equipment if used as intended. |
| Criterion C: | Loss of function is allowed, provided the function is self-recoverable, or can be restored by the operation of the controls by the user in accordance with the manufacturer's instructions. Functions, and/or information stored in non-volatile memory, or protected by a battery backup, shall not be lost. |

7.2 ESD

| | | |
|--------------------------|--|------------------------------------|
| Discharge Voltage: | Air Discharge: | ± 2 kV, ± 4 kV, ± 8 kV |
| | Contact Discharge: | ± 4 kV, ± 6 kV |
| | HCP/VCP: | ± 4 kV, ± 6 kV |
| Polarity: | Positive & Negative | |
| Number of Discharge: | Minimum 10 times at each test point for Air Discharge; Minimum 50 times at each test point for Contact or VCP & HCP Discharge. | |
| Discharge Mode: | Single Discharge | |
| Discharge Period: | 1 second minimum | |
| Criteria for compliance: | There shall be no damage, malfunction or change of status due to the conditioning. Flickering of an indicator during the application of the discharges is permissible, providing that there is no residual change in the EUT or any change in outputs, which could be interpreted by associated equipment as a change. (for EN 50130-4:2011+A1:2014) | |

7.2.1 Test Setup and Procedure



1. Contact discharge was applied only to conductive surfaces of the EUT. Air discharge was applied only to non-conducted surfaces of the EUT.
2. The EUT was put on a 0.8m high wooden table for table-top equipment or 0.1m high for floor standing equipment standing on the ground reference plane (GRP).
3. A horizontal coupling plane(HCP) 1.6m by 0.8m in size was placed on the table, and the EUT with its cables were isolated from the HCP by an insulating support thick than 0.5mm. The VCP 0.5m by 0.5m in size while HCP were constructed from the same material type and thickness as that of the GRP, and connected to the GRP via a 470kΩ resistor at each end. The distance between EUT and any of the other metallic surface excepted the GRP, HCP and VCP was greater than 0.8m.
4. During the contact discharges, the tip of the discharge electrode was touch the EUT before the discharge

switch is operated. During the air discharges, the round discharge tip of the discharge electrode was approached as fast as possible to touch the EUT.

5. After each discharge, the ESD generator was removed from the EUT, the generator is then retriggered for a new single discharge. For ungrounded product, a discharge cable with two resistances were used after each discharge to remove remnant electrostatic voltage. A minimum 50 times discharges at each point of each polarity single discharge were applied to HCP and VCP.

7.2.2 Test Results

For EN 55024:2010+A1:2015

Direct Application Test Results

- Observations: Test Point:
1. All insulated enclosure & seams.
 2. All accessible metal parts of the enclosure.

| Direct Application | | Test Results | | | |
|----------------------|----------------|--------------|-----------|-------------------|---------------|
| Discharge Level (kV) | Polarity (+/-) | Test Point | Test Mode | Contact Discharge | Air Discharge |
| 8 | +/- | 1 | Mode;a | N/A | A |
| 4 | +/- | 2 | | A | N/A |

Indirect Application Test Results

- Observations: Test Point:
1. All sides.

| Indirect Application | | Test Results | | | |
|----------------------|----------------|--------------|-----------|---------------------|-------------------|
| Discharge Level (kV) | Polarity (+/-) | Test Point | Test Mode | Horizontal Coupling | Vertical Coupling |
| 4,6 | +/- | 1 | Mode;a | A | A |

Results:

A: During test, no degradation in the performance of the EUT was observed; After test, no degradation in the performance of the EUT was observed.

N/A: Not applicable (floor mounted EUT or not requested by Standard).

For EN 50130-4:2011+A1:2014

Direct Application Test Results

Observations:

Test Point:

1. All insulated enclosure & seams.
2. All accessible metal parts of the enclosure.

| Direct Application | | Test Results | | | |
|----------------------|----------------|--------------|-----------|-------------------|---------------|
| Discharge Level (kV) | Polarity (+/-) | Test Point | Test Mode | Contact Discharge | Air Discharge |
| 2,4,8 | +/- | 1 | Mode;a | N/A | Pass |
| 6 | +/- | 2 | | Pass | N/A |

Indirect Application Test Results

Observations:

Test Point:

1. All sides.

| Indirect Application | | Test Results | | | |
|----------------------|----------------|--------------|-----------|---------------------|-------------------|
| Discharge Level (kV) | Polarity (+/-) | Test Point | Test Mode | Horizontal Coupling | Vertical Coupling |
| 4,6 | +/- | 1 | Mode;a | Pass | Pass |

Results: Pass

Test phenomenon description for the EUT:

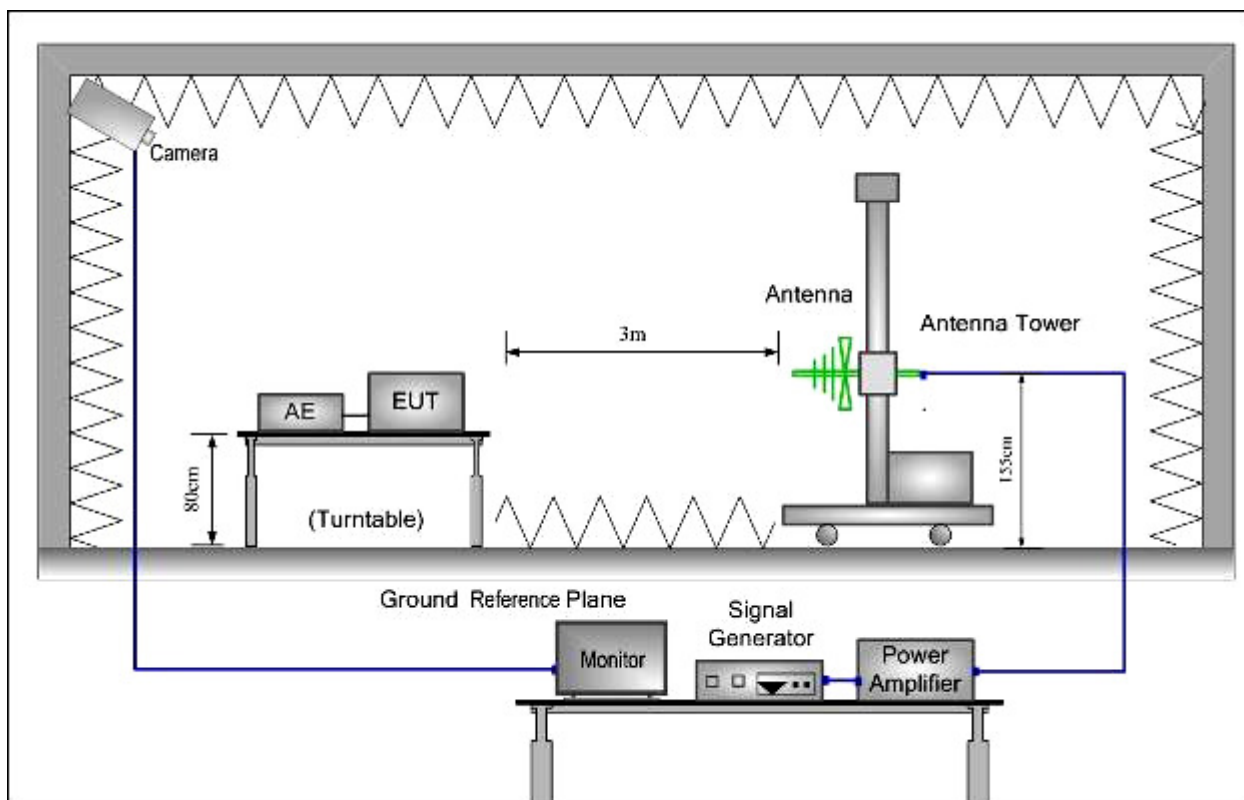
1. The EUT working normal, before the conditioning.
2. Monitor the EUT during the conditioning period to detect no any change in status, during the conditioning.
3. No degradation in the performance of the EUT was observed, after the conditioning.

N/A: Not applicable (not required in the standard or floor mounted the EUT)

7.3 Radiated Immunity

| | |
|--------------------------|---|
| Frequency Range: | 80 MHz to 1 GHz (For EN 55024:2010+A1:2015) 80 MHz to 2.7 GHz (For EN 50130-4:2011+A1:2014) |
| Antenna Polarization: | Horizontal & Vertical (For EN 55024:2010+A1:2015) |
| Test level: | 3.0 V/m on enclosure (For EN 55024:2010+A1:2015) 10 V/m on enclosure (For EN 50130-4:2011+A1:2014) |
| Modulation: | 80%, 1 kHz Amplitude Modulation (For EN 55024:2010+A1:2015) 80%, 1 kHz Amplitude Modulation & 0.5s ON 0.5s OFF Pulse Modulation (For EN 50130-4:2011+A1:2014) |
| Criteria for compliance: | There shall be no damage, malfunction or change of status due to the conditioning. Flickering of an indicator during the conditioning is permissible, providing that there is no residual change in the EUT or any change in outputs, which could be interpreted by associated equipment as a change, and no such flickering of indicators occurs at a field strength of 3 V/m. (For EN 50130-4:2011+A1:2014) |

7.3.1 Test Setup and Procedure



1. For table-top equipment, the EUT was placed in the chamber on a non-conductive table 0.8m high. For arrangement of floor-standing equipment, the EUT was mounted on a non-conductive support 0.1m above the supporting plane. For human body-mounted equipment, the EUT may be tested in the same manner as table top items.
2. If possible, a minimum of 1 m of cable is exposed to the electromagnetic field. Excess length of cables interconnecting units of the EUT shall be bundled low-inductively in the approximate center of the cable to form a bundle 30 cm to 40 cm in length.
3. The EUT was initially placed with one face coincident with the calibration plane. The EUT face being illuminated was contained within the UFA (Uniform Field Area).
4. The frequency ranges to be considered were swept with the signal modulated and pausing to adjust the RF signal level or to switch oscillators and antennas as necessary. Here the frequency range was swept incrementally, the step size was not exceed 1% of the preceding frequency value.
5. The dwell time of the amplitude modulated carrier at each frequency was not be less than the time necessary for the EUT to be exercised and to respond, and was not less than 0.5 s.
6. The test normally was performed with the generating antenna facing each side of the EUT.
7. The polarization of the field generated by each antenna necessitates testing each selected side twice, once with the antenna positioned vertically and again with the antenna positioned horizontally.
8. The EUT was performed in a configuration to actual installation conditions, a video camera and/or a audio monitor were used to monitor the performance of the EUT.

7.3.2 Test Results

For EN 55024:2010+A1:2015

| Frequency | Level | Modulation | Dwell Time | Test Mode | Antenna Polarization | EUT Face | Result / Observations |
|--------------|---------|--|------------|-----------|----------------------|----------|-----------------------|
| 80 MHz-1 GHz | 3.0 V/m | 1 kHz, 80% Amp. Mod, 1 % increment | 3s | Mode;a | V | Front | A |
| | | | | | H | | A |
| | | | | | V | Rear | A |
| | | | | | H | | A |
| | | | | | V | Left | A |
| | | | | | H | | A |
| | | | | | V | Right | A |
| | | | | | H | | A |
| | | | | | V | Top | N/A |
| | | | | | H | | N/A |
| | | | | | V | Bottom | N/A |
| | | | | | H | | N/A |

Remarks:

Front: the front of the EUT faces to transmitting antenna (refer to Radiated Immunity test setup photo)

A: During test, no degradation in the performance of the EUT was observed; After test, no degradation in the performance of the EUT was observed.

N/A: Not applicable.

The EUT does meet the Radiated Immunity requirements of Standard.

For EN 50130-4:2011+A1:2014

| Frequency | Level | Modulation | Test Mode | Dwell Time | Antenna Polarization | EUT Face | Result / Observations |
|----------------|--------|---|-----------|------------|----------------------|----------|-----------------------|
| 80 MHz-2.7 GHz | 10 V/m | (80%, 1kHz, A.M.)&(0.5s ON 0.5s OFF P.M.) | Mode:a | 3s | V | Front | Pass |
| | | | | | H | | Pass |
| | | | | | V | Rear | Pass |
| | | | | | H | | Pass |
| | | | | | V | Left | Pass |
| | | | | | H | | Pass |
| | | | | | V | Right | Pass |
| | | | | | H | | Pass |
| | | | | | V | Top | N/A |
| | | | | | H | | N/A |
| | | | | | V | Bottom | N/A |
| | | | | | H | | N/A |

Test phenomenon description for the EUT:

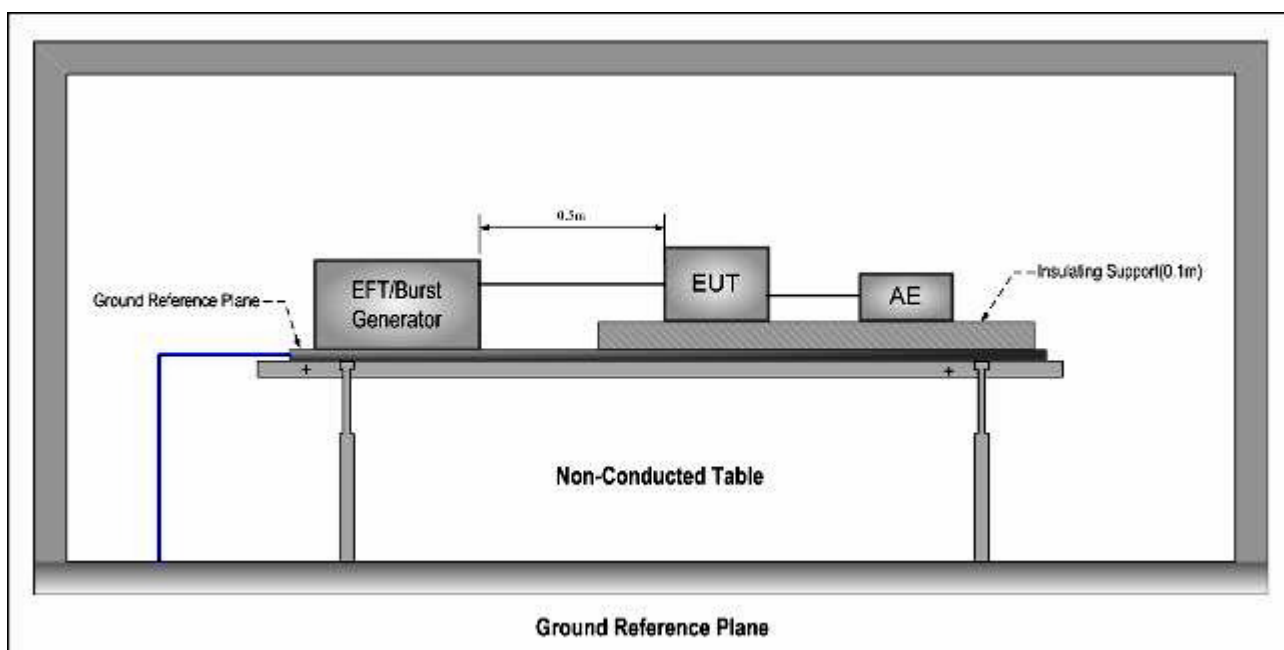
1. The EUT working normal, before the conditioning.
2. Monitor the EUT during the conditioning period and detected no any changes in states, during the conditioning.
3. No degradation in the performance of the EUT was observed, after the conditioning.

7.4 Electrical Fast Transients (EFT)

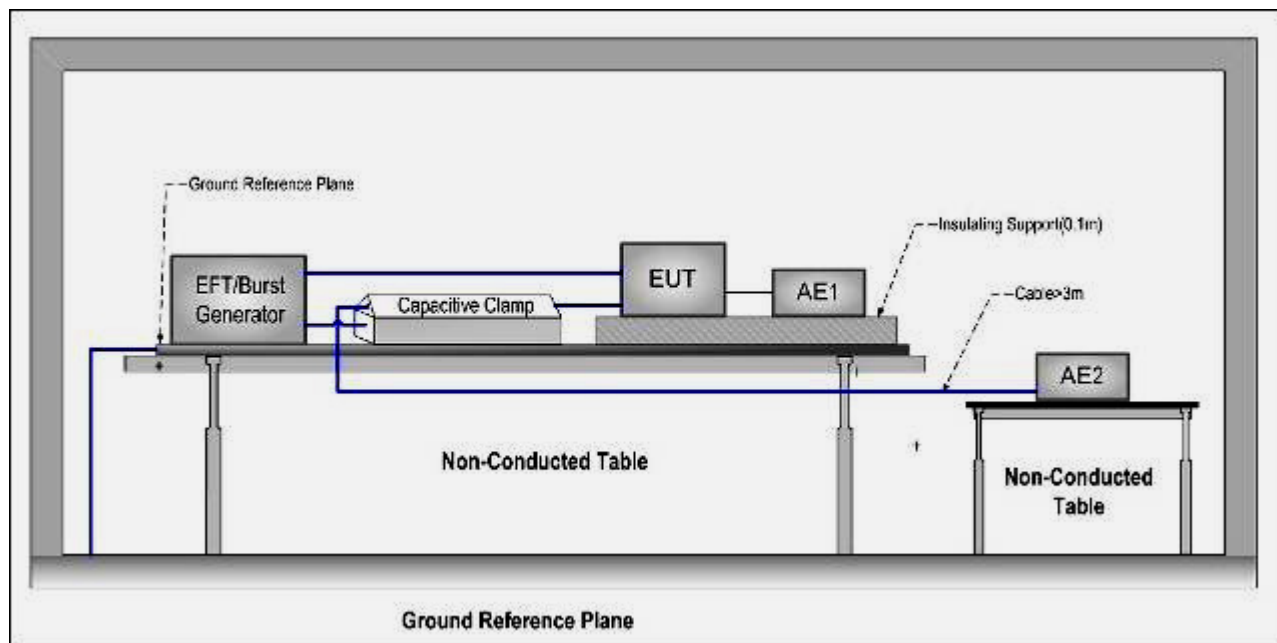
| | |
|--------------------------|---|
| Test Level: | For EN 55024:2010+A1:2015 ±1.0kV on AC port ±0.5 kV on Signal port For EN 50130-4:2011+A1:2014 ±2.0kV on AC port ±1.0kV on Signal ports |
| Polarity: | Positive & Negative |
| Repetition Frequency: | 5kHz For EN 55024:2010+A1:2015, 100KHz For EN 50130-4:2011+A1:2014 |
| Burst Duration: | 300ms |
| Test Duration: | 1 minute per level & polarity |
| Criteria for compliance: | There shall be no damage, malfunction or change of status due to the conditioning. Flickering of an indicator during the conditioning is permissible, providing that there is no residual change in the EUT or any change in outputs, which could be interpreted by associated equipment as a change. (For EN 50130-4:2011+A1:2014) |

7.4.1 Test Setup and Procedure

For AC port:



For signal port



1. The EUT was placed on a ground reference plane (GRP) insulated by an insulating support 0.1 m thick and the GRP was placed on a 0.8m high wooden table for table-top equipment. For floor standing equipment, the EUT was placed on a 0.1m high wooden support above the GRP.
2. The GRP shall project beyond the EUT and the clamp by at least 0.1m on all sides. The distance between the EUT and any other of the metallic surface except the GRP was greater than 0.5m. All cables to the EUT were placed on the insulation support 0.1m above GRP. Cables not subject to EFT were routed as far as possible from cable under test to minimize the coupling between the cables.
3. The length of signal and power cable between the EUT and EFT generator was 0.5m. If the cable is a non-detachable supply cable more than 0.5m, the excess length of this cable shall be folded to avoid a flat coil and situated at a distance of 0.1m above the GRP.
4. The EUT was conducted the below specified level voltage test for line to neutral or line to neutral to earth (for clamp coupling is for the signal line), 120 seconds duration.
5. If the equipment contains identical ports, only one was tested; multiconductor cables, such as a 50-pair telecommunication cable, were tested as a single cable. Cables did not be split or divided into groups of conductors for this test; interface ports, which were intended by the manufacturer to be connected to data cables not longer than 3 m, did not be tested.

7.4.2 Test Results

For EN 55024:2010+A1:2015

AC port

| Lead under Test | Level (\pm kV) | Coupling Direct/Clamp | Test mode | Observations (Performance Criterion) |
|------------------------|----------------------|--------------------------|-----------|---|
| Live + Neutral + Earth | ± 1.0 | Direct | Mode;a | (A) |

A: During test, no degradation in the performance of the EUT was observed; After test, no degradation in the performance of the EUT was observed.

Signal port

| Lead under Test | Level (\pm kV) | Coupling Direct/Clamp | Test mode | Observations (Performance Criterion) |
|---|----------------------|--------------------------|-----------|---|
| Signal cable (LAN port, Audio in & Audio out port, Video in port.) | ± 0.5 | Clamp | Mode;a | (A) |

A: During test, no degradation in the performance of the EUT was observed; After test, no degradation in the performance of the EUT was observed.

For EN 50130-4:2011+A1:2014

AC port

| Lead under Test | Level (\pm kV) | Coupling Direct/Clamp | Test mode | Observations (Performance Criterion) |
|------------------------|----------------------|--------------------------|-----------|---|
| Live + Neutral + Earth | ± 2.0 | Direct | Mode;a | Pass |

Signal ports

| Lead under Test | Level (\pm kV) | Coupling Direct/Clamp | Test mode | Observations (Performance Criterion) |
|---|----------------------|--------------------------|-----------|---|
| Signal cable (LAN port, Audio in & Audio out port, Video in port.) | ± 1.0 | Clamp | Mode;a | Pass |

Test phenomenon description for the EUT:

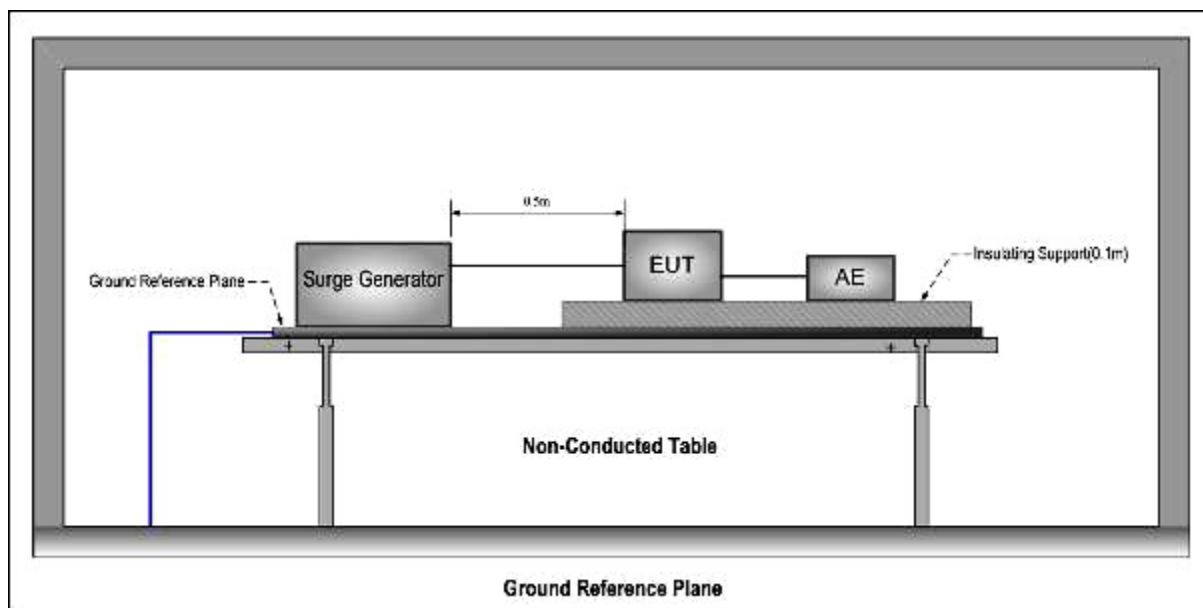
1. The EUT working normal, before the conditioning.
2. Monitor the EUT during the conditioning period and detected no any changes in states, during the conditioning.
3. No degradation in the performance of the EUT was observed, after the conditioning.

7.5 Slow high energy voltage surge

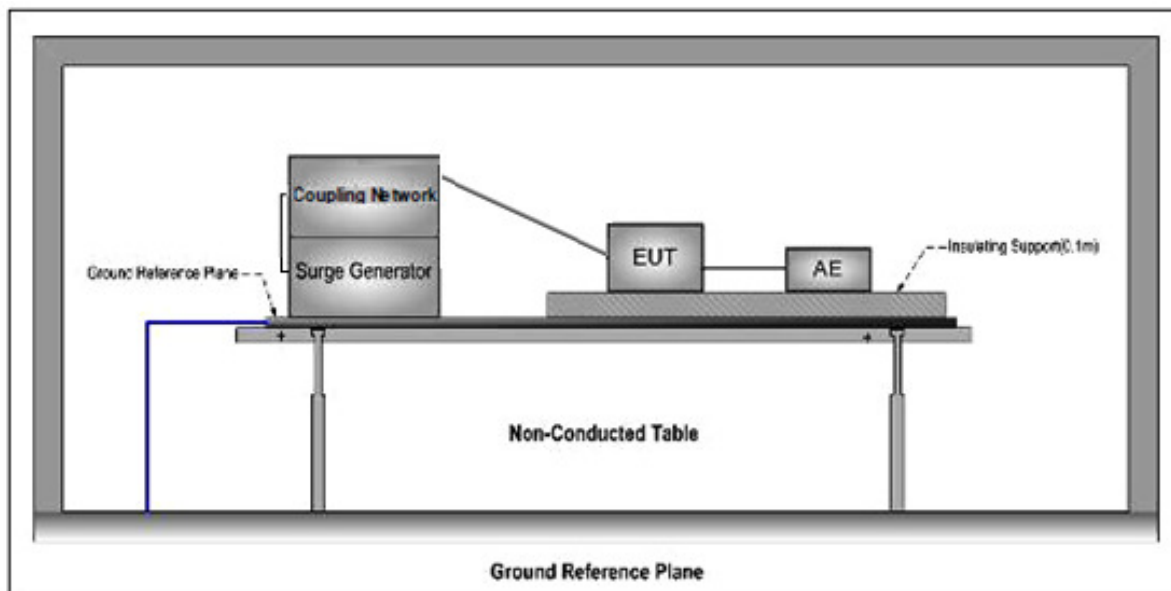
| | |
|-----------------------------|--|
| Test Level: | For EN 55024:2010+A1:2015 ±1.0kV AC cable:LN ±2.0kV Line to PE ± 1.0 kV Signal cable For EN 50130-4:2011+A1:2014 ±0.5, ±1.0kV Line to Line ±0.5, ±1.0, ±2.0kV Line to PE ±0.5, ±1.0kV Line to Ground |
| Polarity: | Positive & Negative |
| Generator source impedance: | 2Ω on Line to Line, 12Ω for Line to Earth 42Ω on Signal ports |
| Trigger Mode: | Internal |
| No. of surges: | 5 positive, 5 negative at 0°, 90°, 180°, 270° for AC Mains, 5 positive, 5 negative for Signal ports. |
| Criteria for compliance: | There shall be no damage, malfunction or change of status due to the conditioning. Flickering of an indicator during the application of the surges is permissible, providing that there is no residual change in the EUT or any change in outputs, which could be interpreted by associated equipment as a change. (For EN 50130-4:2011+A1:2014) |

7.5.1 Test Setup and Procedure

AC port



Signal port



1. The EUT was placed on a ground reference plane (GRP) insulated by an insulating support 0.1 m thick and the GRP was placed on a 0.8m high wooden table for table-top equipment. For floor standing equipment, the EUT was placed on a 0.1m high wooden support above the GRP.
2. The 1,2/50 μ s surge was to be applied to the EUT power supply terminals via the capacitive coupling network. Decoupling networks were required in order to avoid possible adverse effects on equipment not under test that may be powered by the same lines and to provide sufficient decoupling impedance to the surge wave so that the specified wave may be applied on the lines under test.
3. The power cord between the EUT and the coupling/decoupling network was not exceeding 2 m in length. The interconnection line between the EUT and the coupling/ decoupling network shall not exceed 2 m in length.
4. The EUT was conducted 0.5kV and 1kV test voltage for live to neutral and line to neutral and conducted 0.5kV, 1kV and 2kV test voltage for line to earth and neutral to earth, five positive pulses and five negative pulses each at 0°, 90°, 180° and 270° for a.c. power ports and five positive pulses and five negative surge pulses for d.c. power ports. The test levels were applied on the EUT with a 2 Ω generator source impedance for power supply terminals and 40 Ω output impedance for interconnection lines. The tests were done at repetition rate one per minute.

7.5.2 Test Results:

For EN 55024:2010+A1:2015

AC port

| Pulse No | Line-Line | Level (kV) | Surge Interval | Phase (deg) | Test Mode | Observation (Performance Criterion) |
|----------|-----------|------------|----------------|-------------|-----------|-------------------------------------|
| 1-5 | L-N | + 1.0 | 60 s | 0° | Mode;a | (A) |
| 6-10 | L-N | - 1.0 | 60 s | 0° | | (A) |
| 11-15 | L-N | + 1.0 | 60 s | 90° | | (A) |
| 16-20 | L-N | - 1.0 | 60 s | 90° | | (A) |
| 21-25 | L-N | + 1.0 | 60 s | 180° | | (A) |
| 26-30 | L-N | - 1.0 | 60 s | 180° | | (A) |
| 31-35 | L-N | + 1.0 | 60 s | 270° | | (A) |
| 36-40 | L-N | - 1.0 | 60 s | 270° | | (A) |
| 41-45 | L-PE | + 2.0 | 60 s | 0° | | (A) |
| 46-50 | L-PE | - 2.0 | 60 s | 0° | | (A) |
| 51-55 | L-PE | + 2.0 | 60 s | 90° | | (A) |
| 56-60 | L-PE | - 2.0 | 60 s | 90° | | (A) |
| 61-65 | L-PE | + 2.0 | 60 s | 180° | | (A) |
| 66-70 | L-PE | - 2.0 | 60 s | 180° | | (A) |
| 71-75 | L-PE | + 2.0 | 60 s | 270° | | (A) |
| 76-80 | L-PE | - 2.0 | 60 s | 270° | | (A) |
| 81-85 | N-PE | + 2.0 | 60 s | 0° | | (A) |
| 86-90 | N-PE | - 2.0 | 60 s | 0° | | (A) |
| 91-95 | N-PE | + 2.0 | 60 s | 90° | | (A) |
| 96-100 | N-PE | - 2.0 | 60 s | 90° | | (A) |
| 101-105 | N-PE | + 2.0 | 60 s | 180° | | (A) |
| 106-110 | N-PE | - 2.0 | 60 s | 180° | | (A) |
| 111-115 | N-PE | + 2.0 | 60 s | 270° | | (A) |
| 116-120 | N-PE | - 2.0 | 60 s | 270° | | (A) |

A: During test, no degradation in the performance of the EUT was observed; After test, no degradation in the performance of the EUT was observed.

Signal port :

| Pulse No | Line under test | Matching resistor | Level (kV) | Surge Interval | Test Mode | Observation (Performance Criterion) |
|----------|--|-------------------|------------|----------------|-----------|-------------------------------------|
| 1-5 | Line-Ground (LAN port, Alarm port.) | 42 ohm | +1.0 | 60s | Mode;a | (A) |
| 6-10 | Line-Ground (LAN port, Alarm port.) | 42 ohm | -1.0 | 60s | | (A) |

| Pulse No | Line under test | Matching resistor | Level (kV) | Surge Interval | Test Mode | Observation (Performance Criterion) |
|----------|---|-------------------|------------|----------------|-----------|-------------------------------------|
| 1-5 | Line-Ground (Audio out port, Video in port.) | 2 ohm | +1.0 | 60s | Mode;a | (A) |
| 6-10 | Line-Ground (Audio out port, Video in port.) | 2 ohm | -1.0 | 60s | | (A) |

Remarks:

A: No degradation in the performance of the E.U.T. was observed.

The EUT does meet the Surge immunity on telecommunication requirements of Standard.

For EN 50130-4:2011+A1:2014

AC port:

| Pulse No | Line-Line | Level (kV) | Surge Interval | Phase (deg) | Test Mode | Observation (Performance Criterion) |
|----------|-----------|----------------|----------------|-------------|-----------|-------------------------------------|
| 1-10 | L-N | +0.5, 1.0 | 60 s | 0° | Mode;a | Pass |
| 11-20 | L-N | -0.5, 1.0 | 60 s | 0° | | Pass |
| 21-30 | L-N | +0.5, 1.0 | 60 s | 90° | | Pass |
| 31-40 | L-N | -0.5, 1.0 | 60 s | 90° | | Pass |
| 41-50 | L-N | +0.5, 1.0 | 60 s | 180° | | Pass |
| 51-60 | L-N | -0.5, 1.0 | 60 s | 180° | | Pass |
| 61-70 | L-N | +0.5, 1.0 | 60 s | 270° | | Pass |
| 71-80 | L-N | -0.5, 1.0 | 60 s | 270° | | Pass |
| 81-95 | L-PE | +0.5, 1.0, 2.0 | 60 s | 0° | | Pass |
| 96-110 | L-PE | -0.5, 1.0, 2.0 | 60 s | 0° | | Pass |
| 111-125 | L-PE | +0.5, 1.0, 2.0 | 60 s | 90° | | Pass |
| 126-140 | L-PE | -0.5, 1.0, 2.0 | 60 s | 90° | | Pass |
| 141-155 | L-PE | +0.5, 1.0, 2.0 | 60 s | 180° | | Pass |
| 156-170 | L-PE | -0.5, 1.0, 2.0 | 60 s | 180° | | Pass |
| 171-185 | L-PE | +0.5, 1.0, 2.0 | 60 s | 270° | | Pass |
| 186-200 | L-PE | -0.5, 1.0, 2.0 | 60 s | 270° | | Pass |
| 201-215 | N-PE | +0.5, 1.0, 2.0 | 60 s | 0° | | Pass |
| 216-230 | N-PE | -0.5, 1.0, 2.0 | 60 s | 0° | | Pass |
| 231-245 | N-PE | +0.5, 1.0, 2.0 | 60 s | 90° | | Pass |
| 246-260 | N-PE | -0.5, 1.0, 2.0 | 60 s | 90° | | Pass |
| 261-275 | N-PE | +0.5, 1.0, 2.0 | 60 s | 180° | | Pass |
| 306-320 | N-PE | -0.5, 1.0, 2.0 | 60 s | 180° | | Pass |
| 321-335 | N-PE | +0.5, 1.0, 2.0 | 60 s | 270° | | Pass |
| 336-350 | N-PE | -0.5, 1.0, 2.0 | 60 s | 270° | | Pass |

A: During test, no degradation in the performance of the EUT was observed; After test, no degradation in the performance of the EUT was observed.

Signal port:

| Pulse No | Line under test | Matching resistor | Level (kV) | Surge Interval | Test Mode | Observation (Performance Criterion) |
|----------|--|-------------------|------------|----------------|-----------|-------------------------------------|
| 1-5 | Line-Ground (LAN port, Alarm port.) | 42 ohm | +1.0 | 60s | Mode;a | (A) |
| 6-10 | Line-Ground (LAN port, Alarm port.) | 42 ohm | -1.0 | 60s | | (A) |

| Pulse No | Line under test | Matching resistor | Level (kV) | Surge Interval | Test Mode | Observation (Performance Criterion) |
|----------|---|-------------------|------------|----------------|-----------|-------------------------------------|
| 1-5 | Line-Ground (Audio out port, Video in port.) | 2 ohm | -0.5, -1.0 | 60s | Mode;a | Pass |
| 6-10 | Line-Ground (Audio out port, Video in port.) | 2 ohm | +0.5, 1.0 | 60s | | Pass |

Test phenomenon description for the EUT:

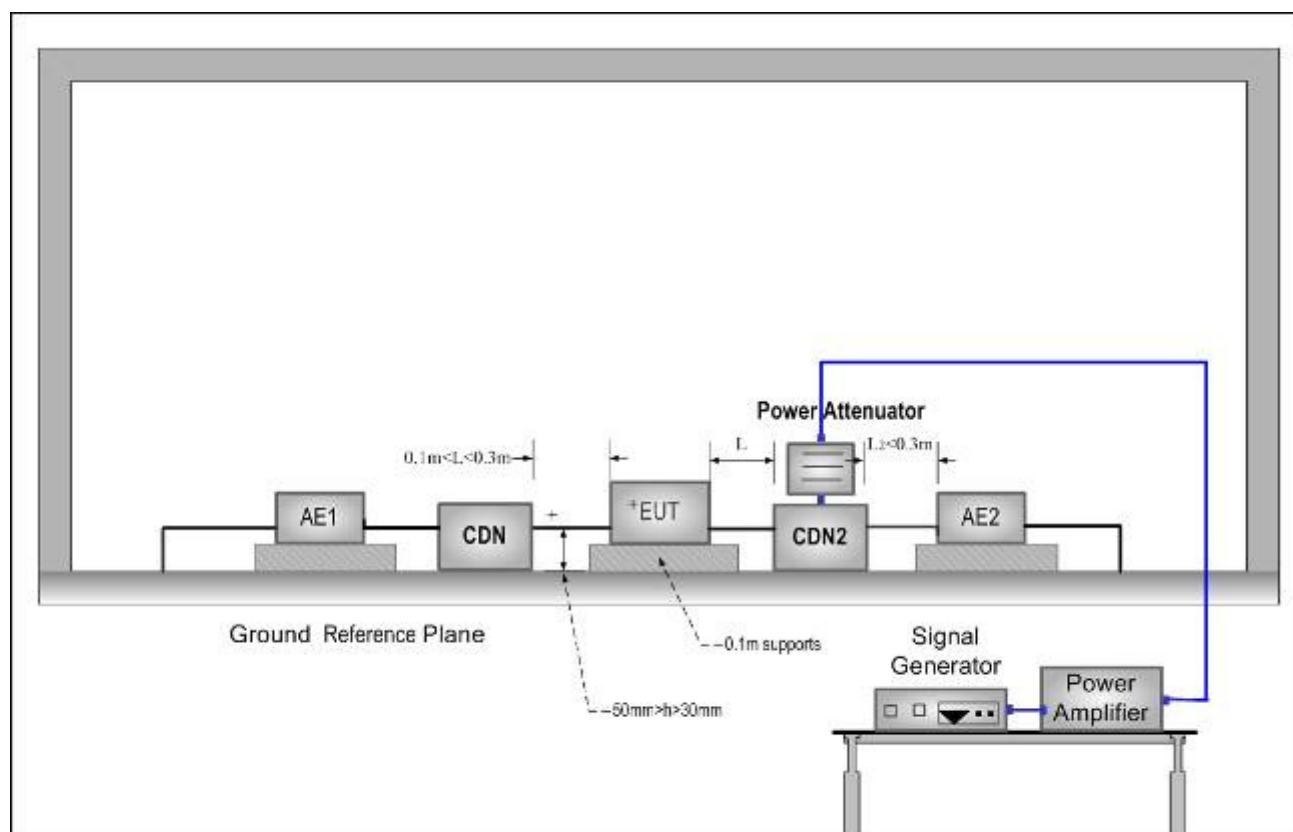
1. The EUT working normal, before the conditioning.
2. Monitor the EUT during the conditioning period and detected no any changes in states, during the conditioning.
3. No degradation in the performance of the EUT was observed, after the conditioning.

7.6 Conducted Immunity

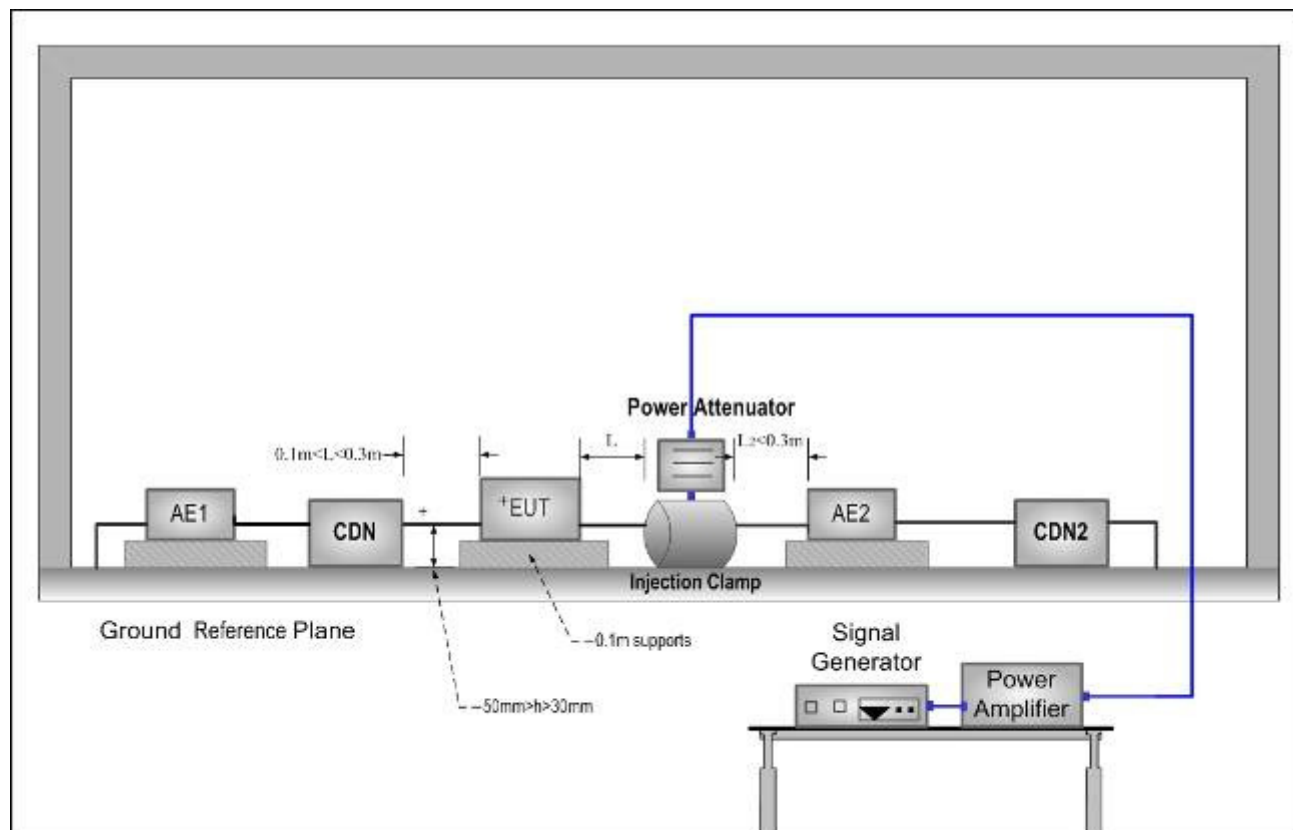
| | |
|--------------------------|--|
| Frequency Range: | For EN 55024:2010+A1:2015 0.15 MHz to 80 MHz For EN 50130-4:2011+A1:2014 0.15 MHz to 100 MHz |
| Test level: | For EN 55024:2010+A1:2015 3.0V r.m.s on AC Ports (unmodulated emf into 150 Ω) & 3.0V r.m.s on Signal Ports (unmodulated emf into 150 Ω) For EN 50130-4:2011+A1:2014 10V r.m.s on AC Ports (unmodulated emf into 150 Ω) & 10V r.m.s on Signal Ports (unmodulated emf into 150 Ω) |
| Modulation: | 80%, 1kHz Amplitude Modulation For EN 55024:2010+A1:2015 80%, 1kHz Amplitude Modulation & 0.5s ON 0.5s OFF Pulse Modulation For EN 50130-4:2011+A1:2014 |
| Criteria for compliance: | There shall be no damage, malfunction or change of status due to the conditioning. Flickering of an indicator during the conditioning is permissible, providing that there is no residual change in the EUT or any change in outputs, which could be interpreted by associated equipment as a change, and no such flickering of indicators occurs at $U_0 = 130$ dBuV. |

7.6.1 Test Setup and Procedure

For AC port



For Signal port



1. The EUT was placed on an insulating support of 0.1m height above a ground reference Plane, arranged and connected to satisfy its functional requirement. All cables exiting the EUT was supported at a height of at least 30 mm above the ground reference plane.
2. The coupling and decoupling devices were required, they were located between 0,1 m and 0,3 m from the EUT. This distance was to be measured horizontally from the projection of the EUT on to the ground reference plane to the coupling and decoupling device.
3. Each AE, used with clamp injection, shall be placed on an insulating support 0,1 m above the ground reference plane. A decoupling network shall be installed on each cable between the EUT and AE except the cable under test. All cables connected to each AE, other than those being connected to the EUT, shall be provided with decoupling networks. The decoupling networks connected to each AE (except those on cables between the EUT and AE) shall be applied no further than 0,3 m from the AE. The cable(s) between the AE and the decoupling network (s) or in between the AE and the injection clamp shall not be bundled nor wrapped and shall be kept between 30 mm and 50 mm above the ground reference plane.
4. The frequency range was swept from 150 kHz to 80 MHz, using the signal levels established during the setting process, and with the disturbance signal 80% amplitude modulated with a 1 kHz sine wave, pausing to adjust the RF signal level or to change coupling devices as necessary. Where the frequency was swept incrementally, the step size do not exceed 1% of the preceding frequency value. The dwell time of the amplitude modulated carrier at each frequency was not less than the time necessary for the EUT to be exercised and to respond, and was not less than 0.5 s.
5. If the interface ports, which were intended by the manufacturer to be connected to data cables not longer than 3 m, did not be tested.

7.6.2 Test Results:

For EN 55024:2010+A1:2015

AC Port

| Frequency | Line | Test Level | Modulation | Step Size | Dwell Time | Test Mode | Observation (Performance Criterion) |
|-------------------|----------------------|------------|----------------------|-----------|------------|-----------|--|
| 150 kHz to 80 MHz | 3 Wires Supply Cable | 3.0V r.m.s | 80%, 1 kHz Amp. Mod. | 1% | 3s | Mode;a | No Loss of Function (A) |

Signal Port

| Frequency | Line | Test Level | Modulation | Step Size | Dwell Time | Test Mode | Observation (Performance Criterion) |
|-------------------|---|------------|----------------------|-----------|------------|-----------|--|
| 150 kHz to 80 MHz | Signal Cable (LAN port, Audio in & Audio out port, Video in port.) | 3.0V r.m.s | 80%, 1 kHz Amp. Mod. | 1% | 3s | Mode;a | No Loss of Function (A) |

A: During test, no degradation in the performance of the EUT was observed; After test, no degradation in the performance of the EUT was observed.

The EUT does meet the Conducted Immunity requirements of Standard.

For EN 50130-4:2011+A1:2014

| Frequency | Line | Test Level | Modulation | Step Size | Dwell Time | Test Mode | Test Results |
|------------------|--|------------|-----------------------------------|-----------|------------|-----------|--------------|
| 150kHz to 100MHz | AC Mains | 10Vr.m.s | 80%, 1kHz Amp. Mod. | 1% | 3s | Mode;a | Pass |
| 150kHz to 100MHz | AC Mains | 10Vr.m.s | 0.5s ON, 0.5s OFF P.M. Mod. | 1% | 3s | | Pass |
| 150kHz to 100MHz | Signal ports (LAN port, Audio in & Audio out port, Video in port.) | 10Vr.m.s | 80%, 1kHz Amp. Mod. Clamp | 1% | 3s | | Pass |
| 150kHz to 100MHz | Signal ports (LAN port, Audio in & Audio out port, Video in port.) | 10Vr.m.s | 0.5s ON, 0.5s OFF P.M. Mod. Clamp | 1% | 3s | | Pass |

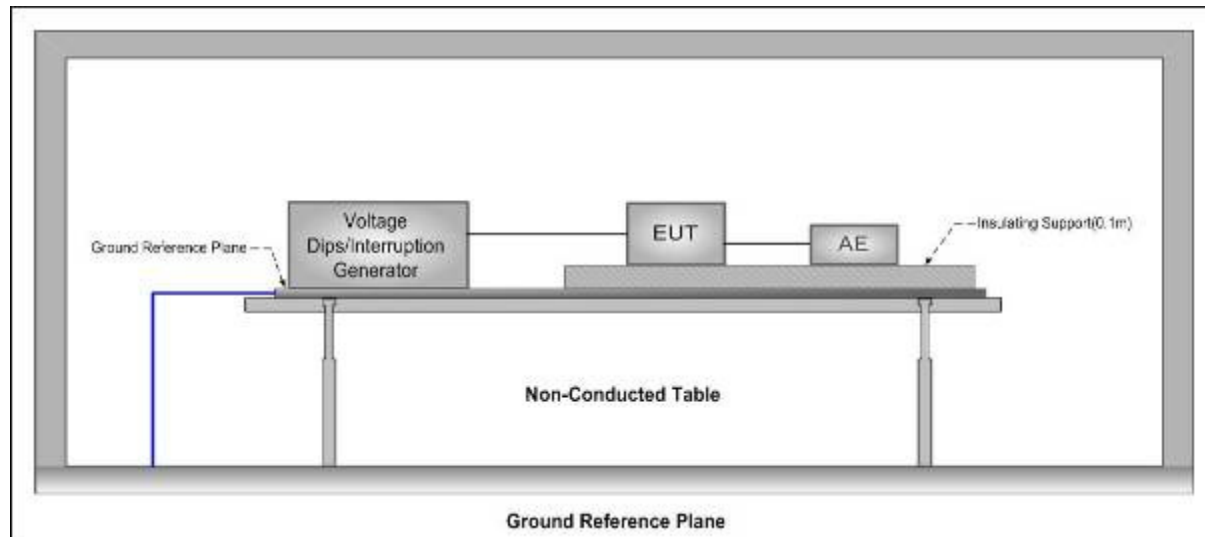
Test phenomenon description for the EUT:

1. The EUT working normal, before the conditioning.
2. Monitor the EUT during the conditioning period and detected ripples in states at signal ports testing, during the conditioning, then could be recovered after test.
3. No degradation in the performance of the EUT was observed, after the conditioning.

7.7 Voltage Dips and Interruptions

| | |
|------------------------------|---|
| Test voltage: | Refer to U_T |
| Test Level: | For EN 55024:2010+A1:2015 0% of U_T (Supply Voltage) for 0.5 Periods 0% of U_T (Supply Voltage) for 250 Periods 70 % of U_T (Supply Voltage) for 25 Periods For EN 50130-4:2011+A1:2014 0 % U_T for 250 period 40 % U_T for 10 period 70 % U_T for 25 period 80 % U_T for 250 period (U_T is the nominal supply voltage.) |
| No. of Dips / Interruptions: | 3 per Level For EN 55024:2010+A1:2015 |
| Criteria: | There shall be no damage, malfunction or change of status due to the conditioning. Flickering of an indicator during the conditioning is permissible, providing that there is no residual change in the EUT or any change in outputs, which could be interpreted by associated equipment as a change. For EN 50130-4:2011+A1:2014 |

7.7.1 Test Setup and Procedure



1. The EUT was placed on a ground reference plane (GRP) insulated by an insulating support 0.1 m thick and the GRP was placed on a 0.8m high wooden table for table-top equipment. For floor standing equipment, the EUT was placed on a 0.1m high wooden support above the GRP.
2. The test was performed with the EUT connected to the test generator with the shortest power supply cable as specified by the EUT manufacturer.
3. The EUT was tested for each selected combination of test level and duration with a sequence of three dips /interruptions with intervals of 10 s minimum. Each representative mode of operation was tested.
4. For EUT with more than one power cord, each power cord was tested individually.

7.7.2 Test Results

For EN 55024:2010+A1:2015

U_T : AC 100V & 240V

| Test Level % U_T | Phase | Duration of drop out in Periods | No of drop out | Time between drop out | Test Mode | OBSERVATIONS (PERFORMANCE CRITERION) |
|-----------------------|---------|---------------------------------|----------------|-----------------------|-----------|--------------------------------------|
| 0 | 0°,180° | 0.5 | 3 | 10s | Mode;a | (A) |
| 0 | 0°,180° | 250 | 3 | 10s | | (B) |
| 70 | 0°,180° | 25 | 3 | 10s | | (B) |

Remark:

U_T : the nominal supply voltage.

A: During test, no degradation in the performance of the EUT was observed; After test, no degradation in the performance of the EUT was observed.

B: B: During test, the EUT restarted automatically, After test, it could recover automatically after test.

The EUT does meet the Voltage Dips and Interruptions requirements of Standard.

For EN 50130-4:2011+A1:2014

U_T : AC 100V & 240V

| Test Level % U_T | Phase | Duration of drop out in Periods | No. of drop out | Time between drop out | Test Mode | Test Results |
|-----------------------|---------|---------------------------------|-----------------|-----------------------|-----------|--------------|
| 0 | 0°,180° | 250 | 3 | 10s | Mode;a | Pass |
| 40 | 0°,180° | 10 | 3 | 10s | | Pass |
| 70 | 0°,180° | 25 | 3 | 10s | | Pass |
| 80 | 0°,180° | 250 | 3 | 10s | | Pass |

Remark:

According to the client's requirement, we used a UPS as ancillary equipment to meet the requirements of this clause during test.

U_T : the nominal supply voltage.

Test phenomenon description for the EUT:

1. The EUT working normal, before the conditioning.
2. Monitor the EUT during the conditioning period and detected no any changes in states, during the conditioning.
3. No degradation in the performance of the EUT was observed, after the conditioning.

8 Photographs (Test Setup For the EUT)

8.1 Conducted Emissions on Mains Terminals Test Setup



8.2 Conducted Emissions on Telecommunication Terminals Test Setup



8.3 Radiated Emission Test Setup

30MHz to 1GHz



1GHz to 6GHz



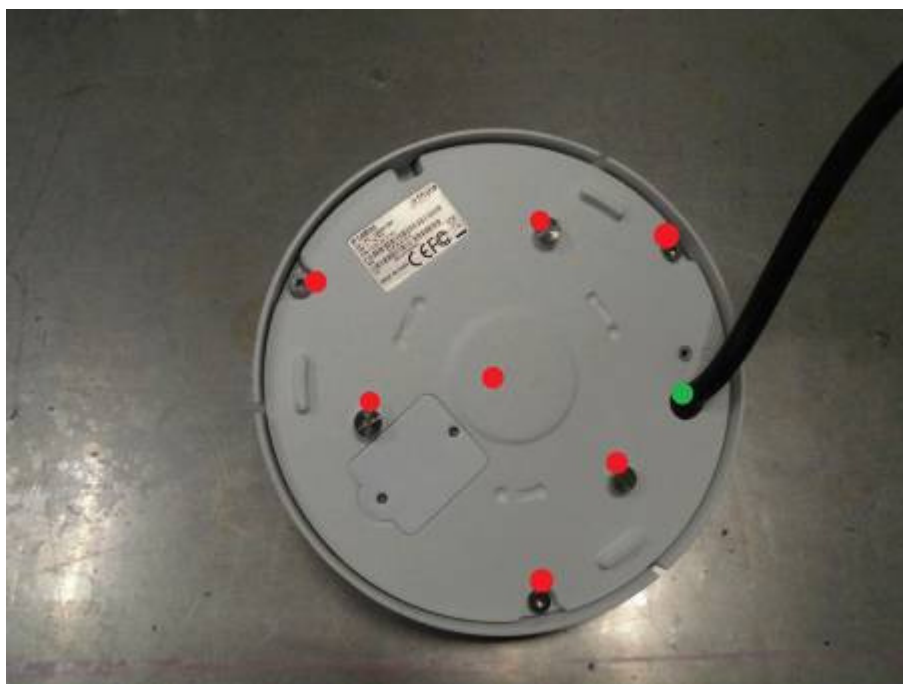
8.4 Flicker Test Setup



8.5 ESD Test Setup

- Contact discharge
- Air discharge





8.6 Radiated Immunity Test Setup



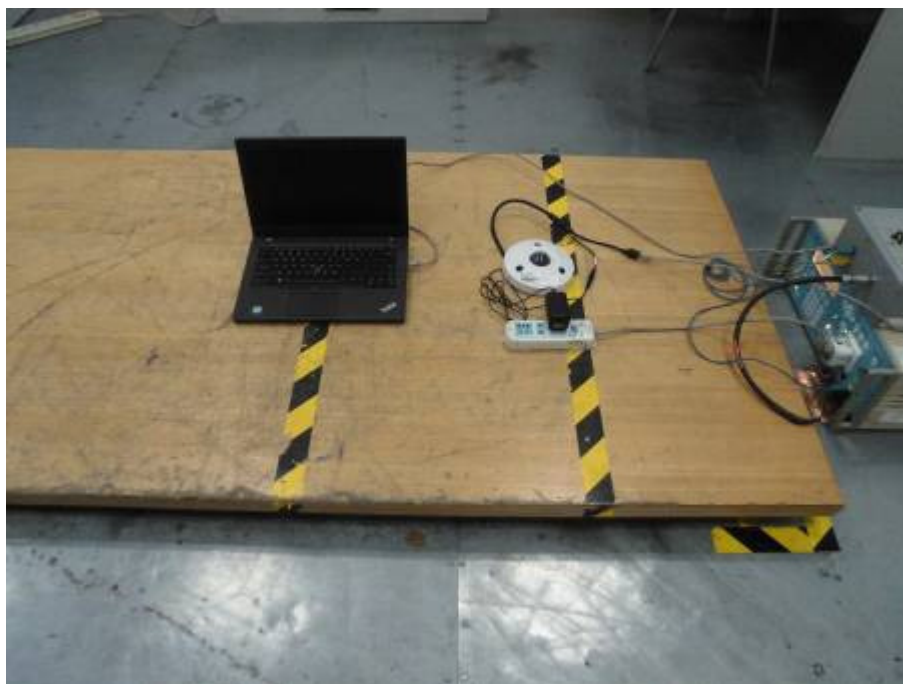
8.7 EFT, Surge, Voltage Dip and Interruptions on Mains Terminals Test Setup



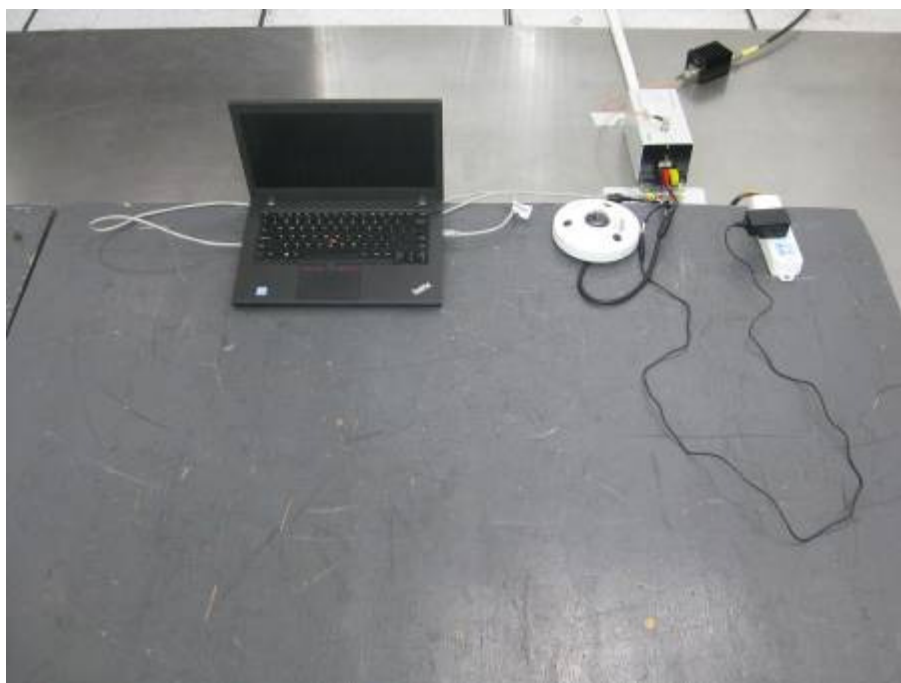
8.8 EFT on Signal Terminals Test Setup



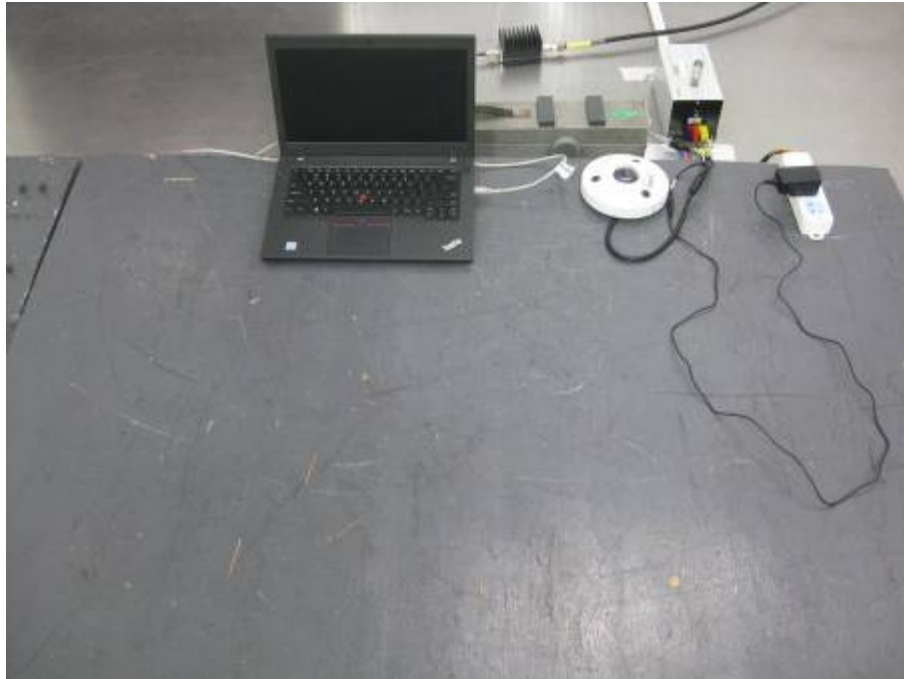
8.9 Surge on Signal Terminals Test Setup



8.10 Conducted Immunity on Mains Terminals Test Setup



8.11 Conducted Immunity on Signal Terminals Test Setup

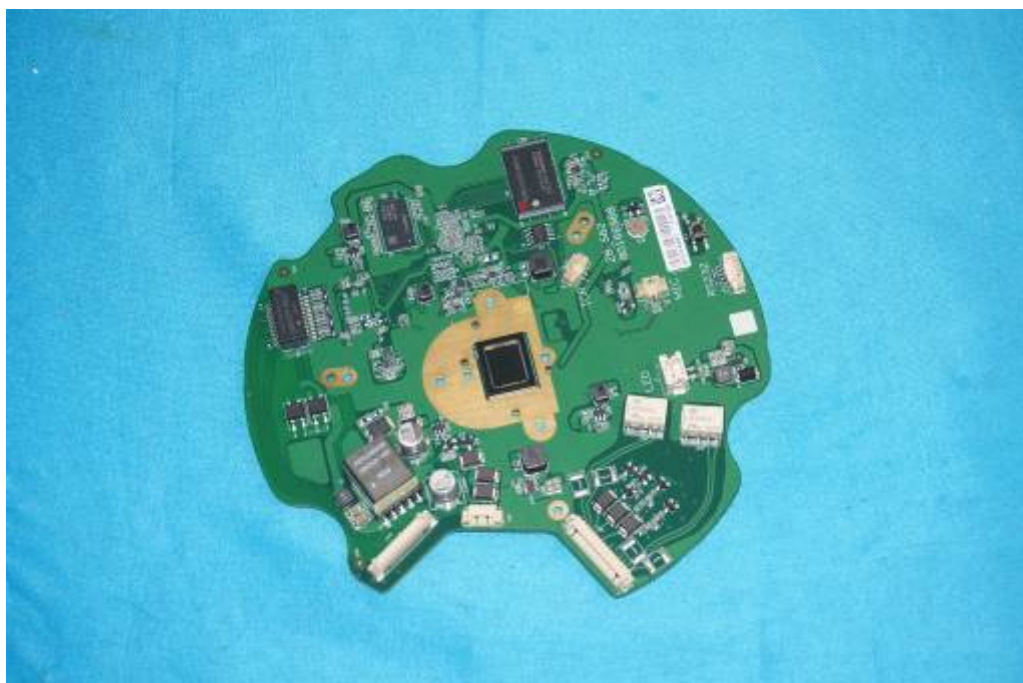


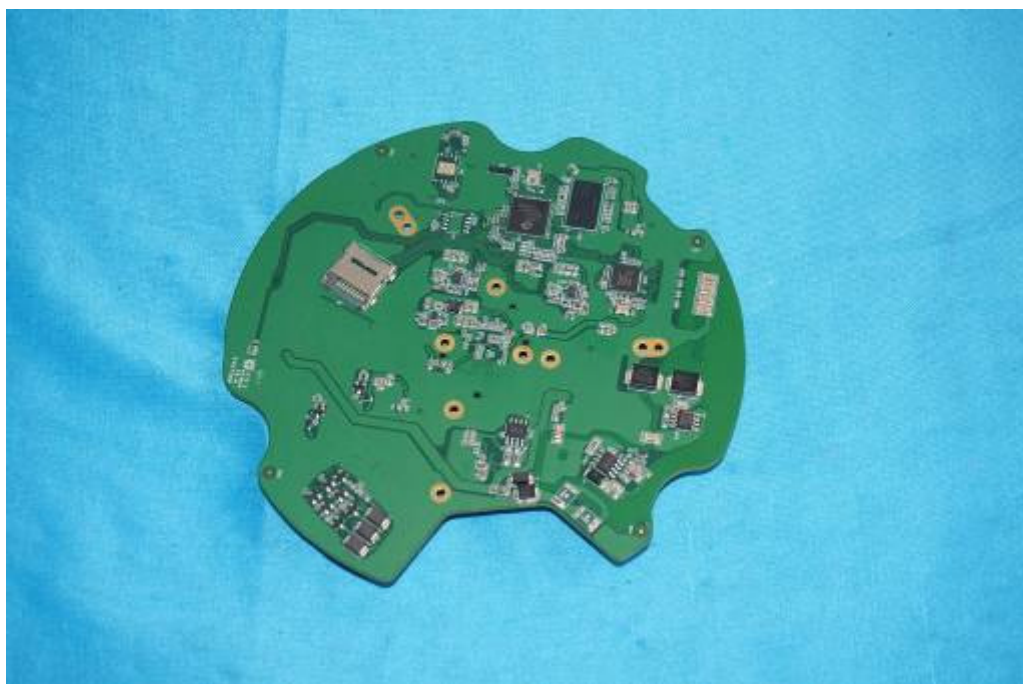
9 EUT Constructional Details

9.1 Exterior of EUT



9.2 Interior of EUT





--End of the Report--