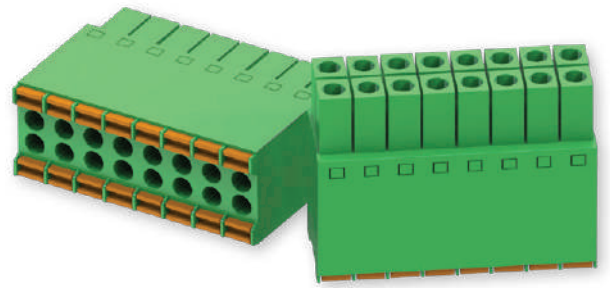


# 2X8PIN CONNECTOR WITHOUT SCREWS



## TECHNICAL DATA

### GENERAL

Voltage rating	300 V
Current rating	8 A
Withstand voltage	1600 V
Wire range AWG	24 – 16 AWG
Strip length	9 – 10 mm
Pitch	3.5 mm
Conductor cross section	0.2 – 1.5 mm <sup>2</sup>
Positions per level	8
Levels	2

### ADDITIONAL

Temperature range	-40°C + 105°C
Insulator material	PA66
Internal contacts material	Copper alloy
Internal contacts finishing	Sn plated
RoHS	✓
REACH	✓

