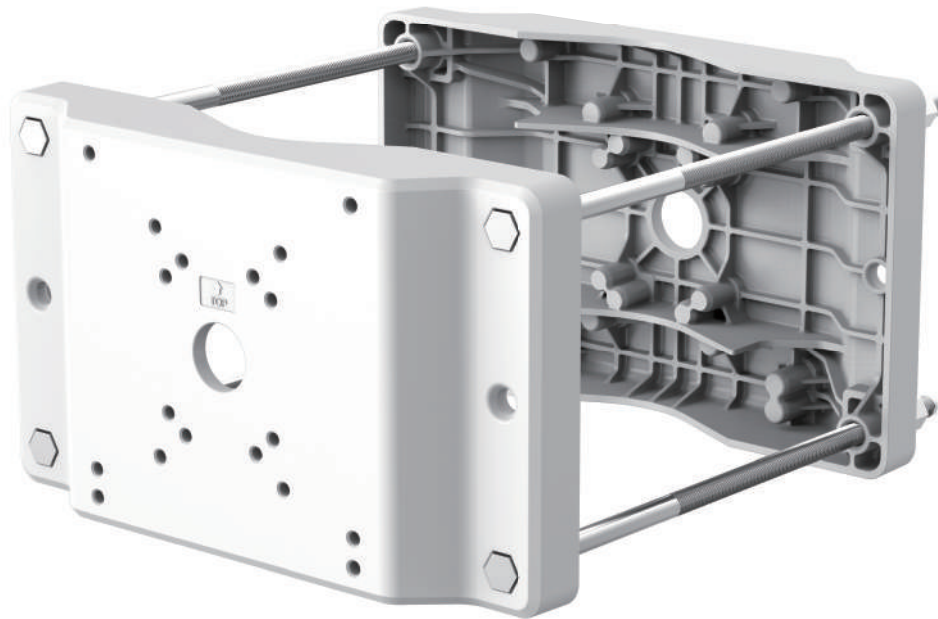


# DH-PFA153

Heavy-duty Pole Mount Bracket

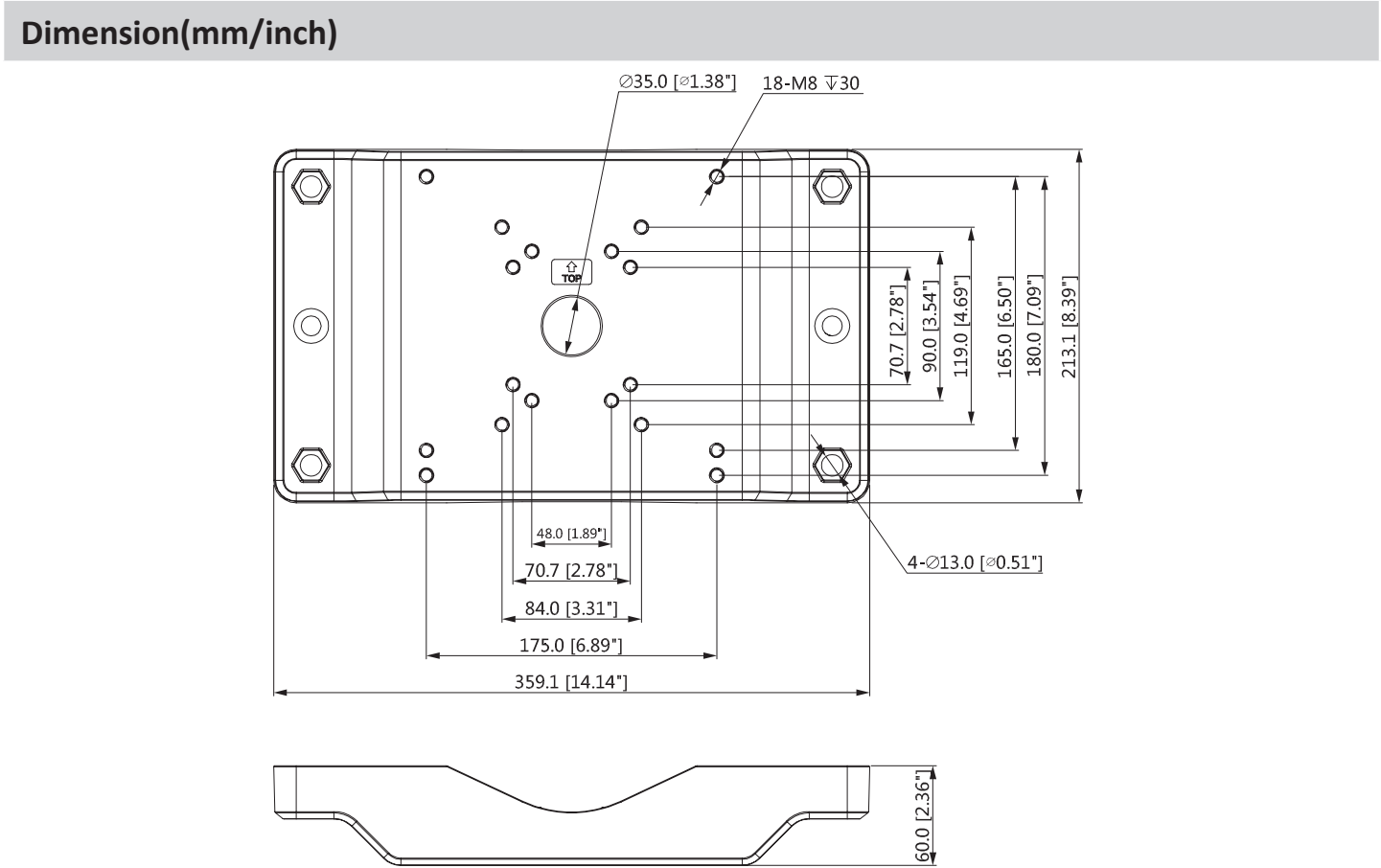


## Features

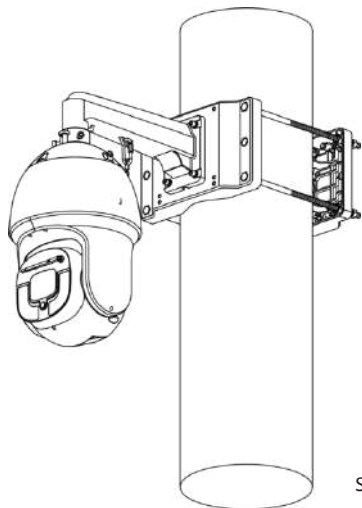
- Material: aluminium & stainless
- High load bearing capacity
- Aesthetic design, double-sided installation
- High compatibility with speed domes , PTZ, outdoor surveillance box, etc.

Technical Specification	
Model	DH-PFA153
General	
Material	Aluminum & stainless
Dimension (WxHxD)	359mmx60mmx213mm (14.14"x2.36"x8.39")
Weight	5kg (11.02lb)
Load Bearing	30kg (66.14lb)
Mast Diameter	φ150~φ300mm(φ5.91"~φ11.81")
Color	White
Operating Temperature	-40℃ ~+60℃ (-40℉ ~+140℉ )
Humidity	0~90% RH
Installation	Pole mount
Applicable Model	Please see "Accessory Selector" on <a href="http://www.dahuasecurity.com">www.dahuasecurity.com</a>

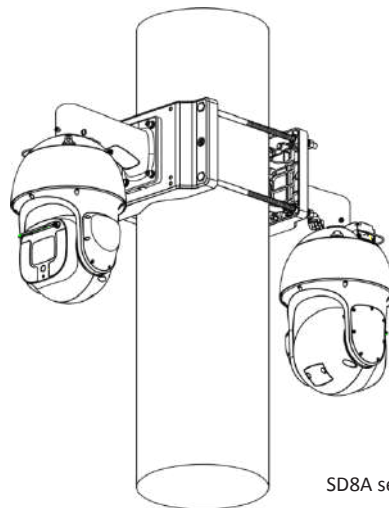
Ordering Information		
Type	Part Number	Description
Camera Mount Series	DH-PFA153	Heavy-duty pole mount bracket
	DH-PFA153A	Corrosion-proof heavy-duty pole mount bracket



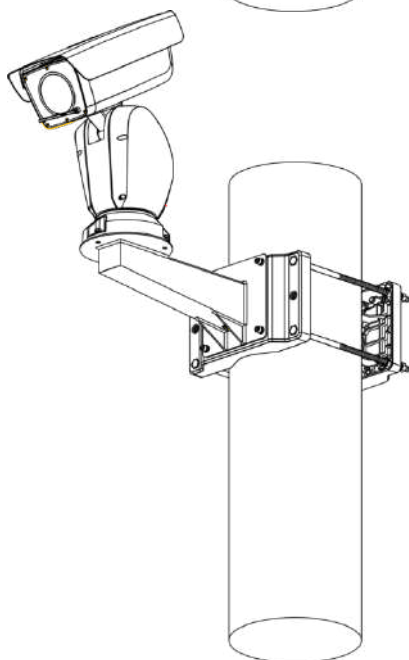
## Application



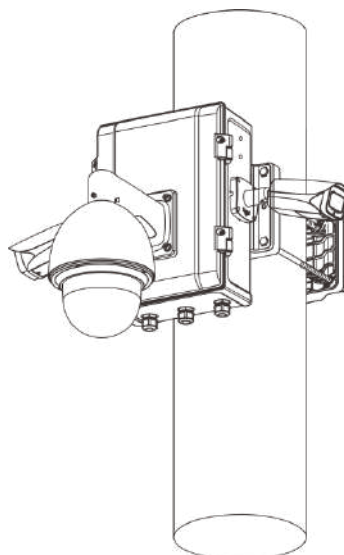
SD10 series PTZ camera



SD8A series PTZ camera



Hybrid pan & tilt camera



outdoor surveillance box

## Package Information

- Pole mount bracket body \*2
- M12x360 bolt \*4
- M8x35 screw \*4
- Washer sleeve \*4
- Spring washer \*4
- ST3x8 screw \*2
- M12 nut \*8
- Cable tie \*1
- Anti-slide sleeve\*1
- S6.0 wrench \*1
- User manual \*1