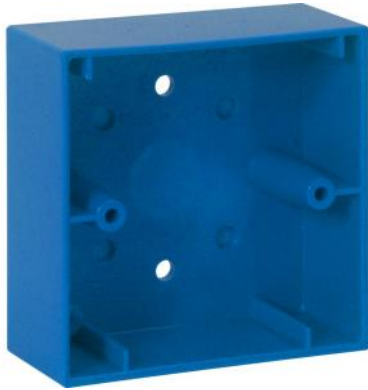


Surface mount housing for small MCP, blue, similar to RAL 5015



Part-No.: 704981

Blue, for small design electronic modules Part No. 804950/51, 804955/56 with housing Part No. 704951.

Common technical data

Dimensions

W: 88 mm H: 88 mm D: 36 mm



Can also be used for IQ8TAL. Cable entry requires cable glands Part No. 704147/704148.



Mounting material

Features:

- Flat design
- Plug-in connection terminals
- Optional terminal
- Triple key function (test, open, reset)
- Detectors that are not ready for operation can be marked with the "Out of order" label by reversing the enclosed glass pane